

(12) **UK Patent Application** (19) **GB** (11) **2 297 558** (13) **A**

(43) Date of A Publication 07.08.1996

(21) Application No **9601977.3**

(22) Date of Filing **31.01.1996**

(30) Priority Data
(31) **9502022** (32) **02.02.1995** (33) **GB**

(71) Applicant(s)
Ilham Mohamed saleh Saeed Abuljadayel
11 St John's Wood Park, St John's Wood, LONDON,
NW8 6QP, United Kingdom

Ghazi Jaswinder Dhoot
11 St John's Wood, St John's Wood, LONDON,
NW8 6QP, United Kingdom

(72) Inventor(s)
Ilham Mohamed saleh Saeed Abuljadayel

(74) Agent and/or Address for Service
D Young & Co
21 New Fetter Lane, LONDON, EC4A 1DA,
United Kingdom

(51) INT CL⁶
C12N 5/00 5/08

(52) UK CL (Edition O)
C6F FX F105
C6Y YM Y410 Y501 Y504
U1S S1303 S1313 S1317 S1328 S2411 S2415

(56) Documents Cited
Cancer Research 1981,41,4621-4628 FEBS Letters
1985,188(2),197-204

(58) Field of Search
UK CL (Edition O) **C6F FHC1 FX**
INT CL⁶ **C12N 5/00 5/06 5/08**
ONLINE: WPI,CLAIMS,DIALOG/BIOTECH

(54) **Conversion of a more committed cell into an undifferentiated cell**

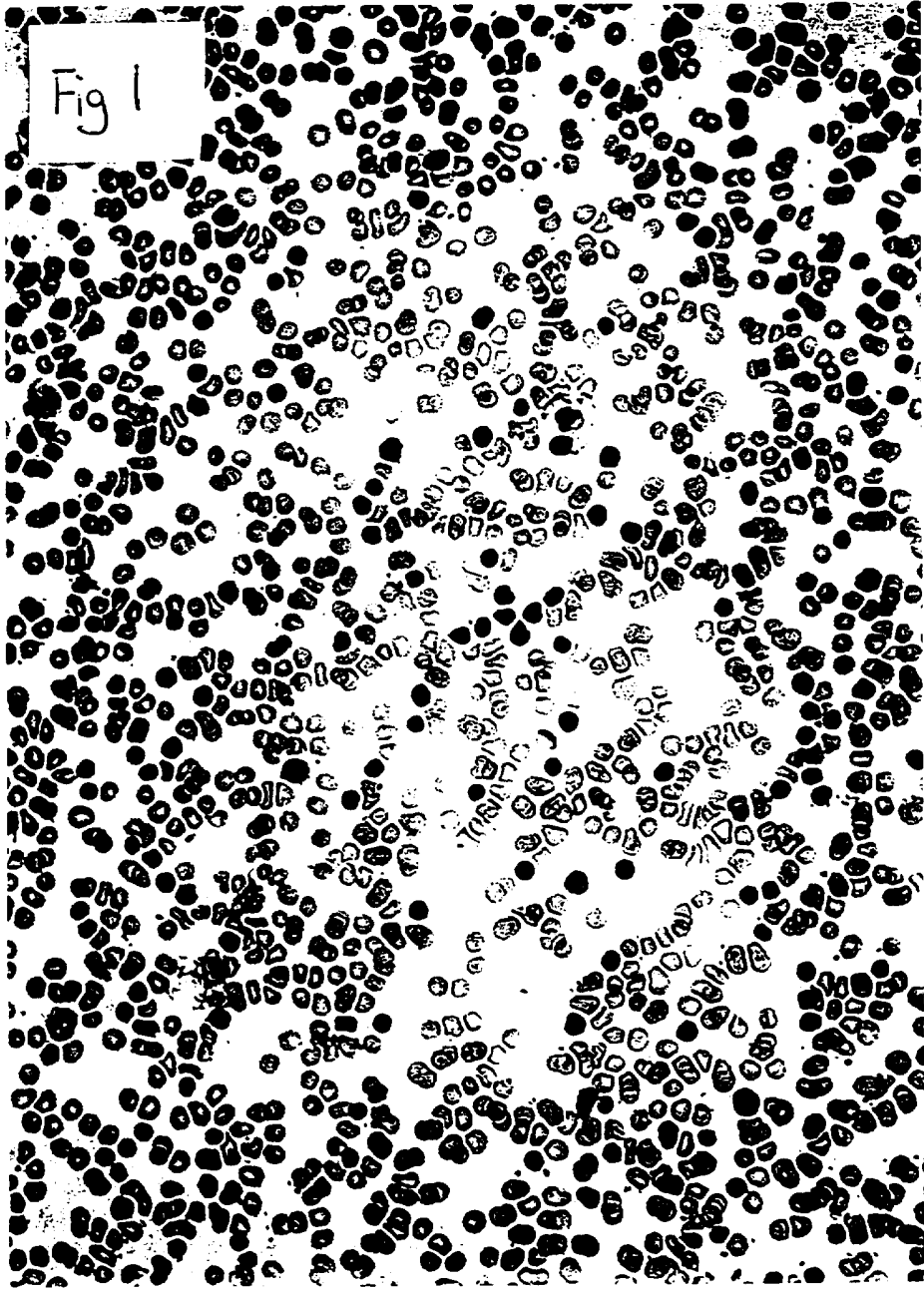
(57) An more committed cell is converted to a differentiated cell by treatment with an agent, preferably cyclic adenosine monophosphate, a CD4 or CD8 molecule, at least part of a T-cell receptor, a polypeptide, or an antibody (monoclonal, polyclonal or cross-reactive), which agent may be attached to the more committed cell. The undifferentiated cell may be an MHC Class I+ and/or II+ cell, a CD34+ cell, a lymphohaematopoietic progenitor cell, a pluripotent stem cell, or a cell comprising a stem cell antigen. The agent may act extracellularly of the more committed cell, preferably on a cell surface receptor, which may comprise an alpha-and/or beta- component, preferably comprising homologous regions of HLA-DR. The agent may modify MHC gene expression. The agent may be used in conjunction with a biological response modifier, preferably and alkylating agent, especially cyclophosphamide. The more committed cell may be a B-cell or a T-cell. The undifferentiated cell may be transformed into a recommitted cell, preferably a B-cell, a T-cell or a granulocyte.

There is also described a CD19+/CD3+ cell.

The undifferentiated, or recommitted, cells may be used as pharmaceuticals, especially for the treatment of immunological disorders, cancer, blood disorders, cellular or tissue regeneration, or congenital metabolic disorders.

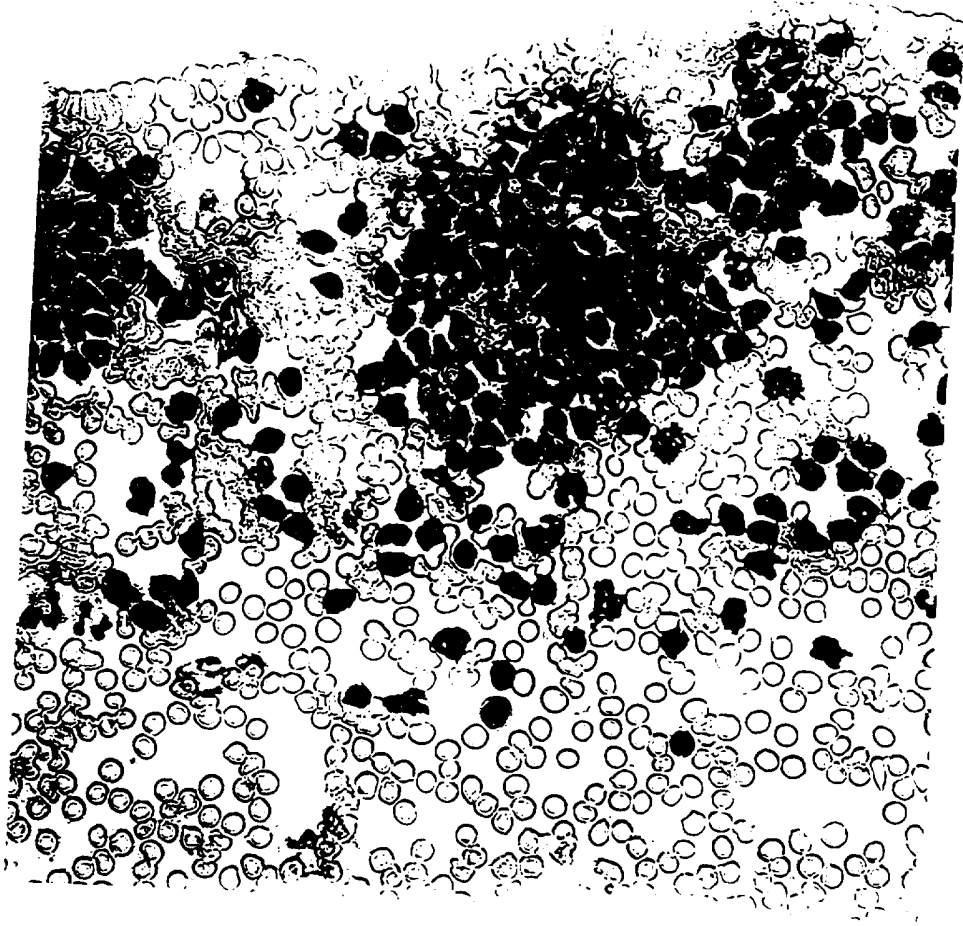
GB 2 297 558 A

1/6



2/6

Fig 2

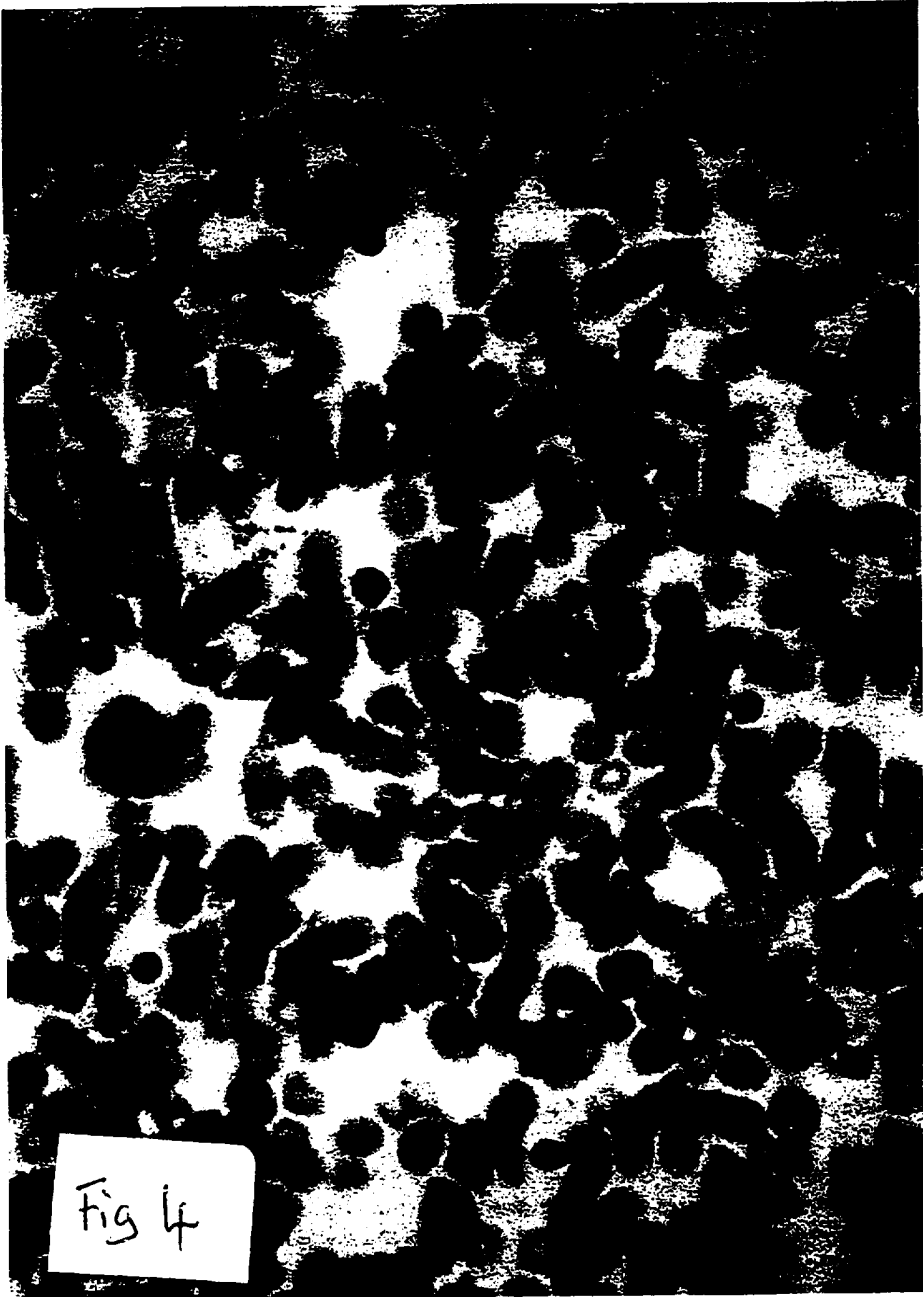


3/6



Fig 3

4/6



5/6

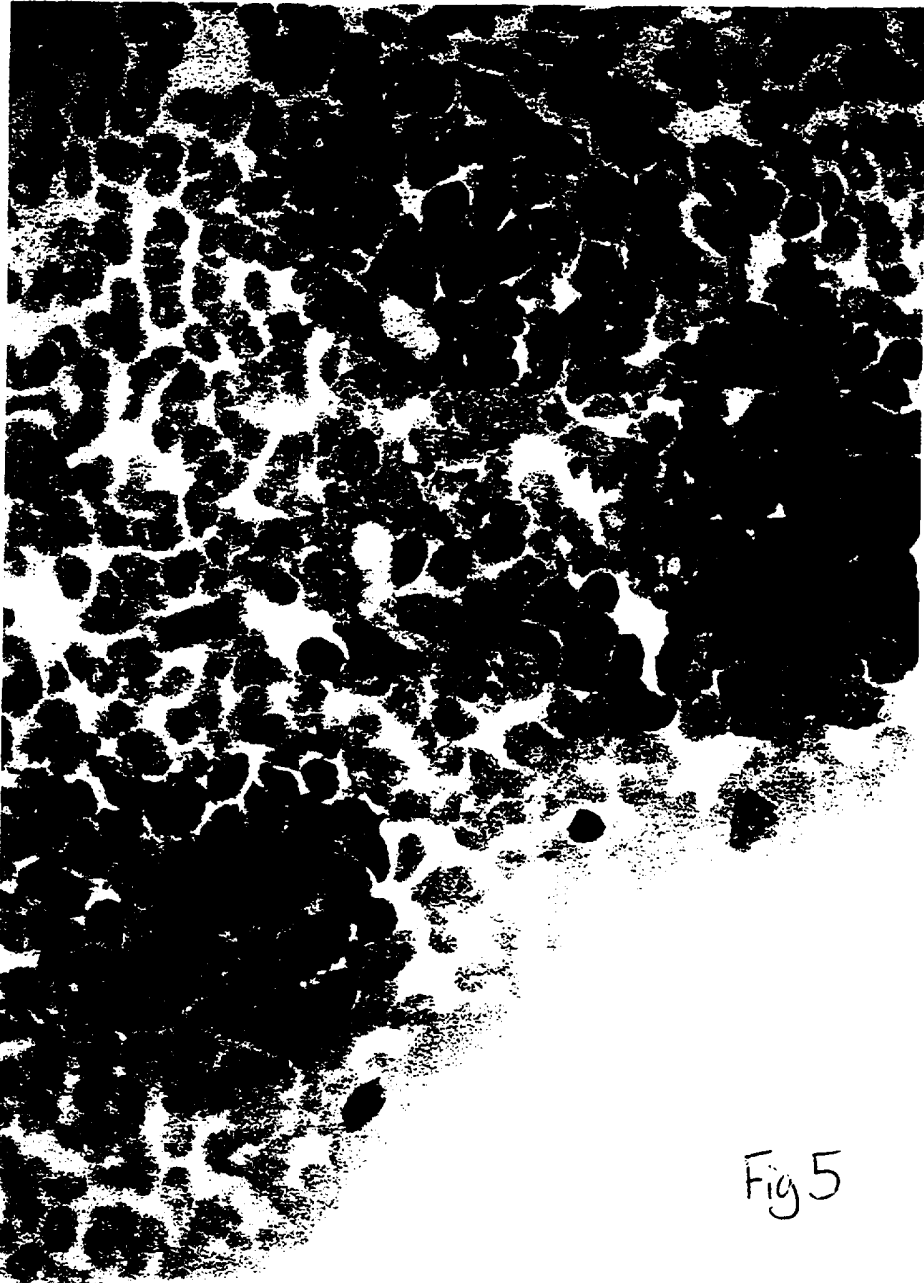


Fig 5

6/6

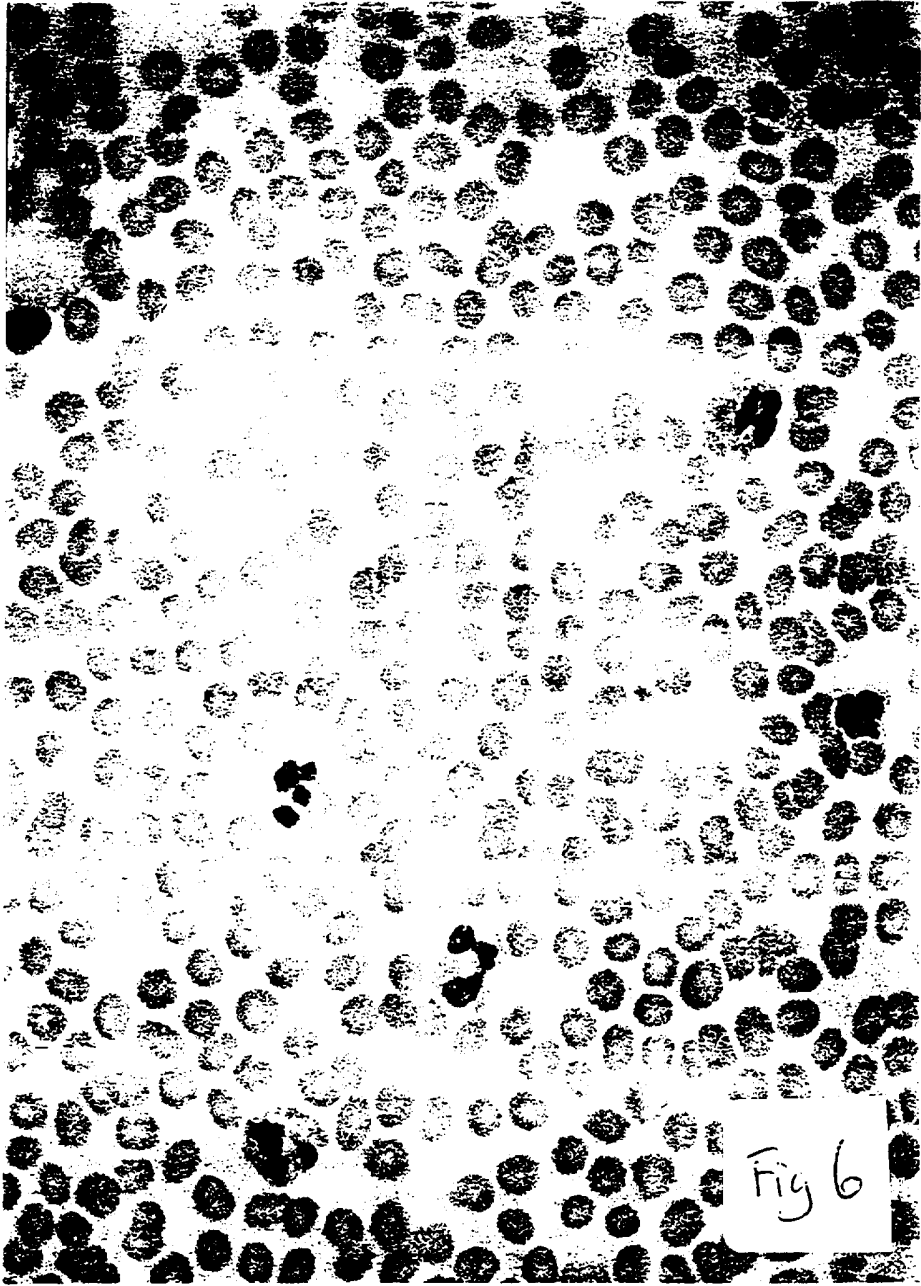


Fig 6

A METHOD OF PREPARING AN UNDIFFERENTIATED CELL

The present invention relates to a method of preparing an undifferentiated cell.

5 In particular, the present invention relates to a method of preparing an undifferentiated cell from a more committed cell.

In addition the present invention relates to the use of the undifferentiated cell of the present invention for the preparation of a new more committed cell - i.e. a
10 recommitted cell.

The present invention also relates to the use of the undifferentiated cell of the present invention or the recommitted cell of the present invention to have an effect (directly or indirectly via the use of products obtained therefrom) on the immune system, such
15 as the alleviation of symptoms associated with, or the partial or complete cure from, an immunological condition or disease.

By way of introduction, differentiation is a process whereby structures and functions of cells are progressively committed to give rise to more specialised cells, such as the
20 formation of T cells or B cells. Therefore, as the cells become more committed, they become more specialised.

In contrast, retro-differentiation is a process whereby structures and functions of cells are progressively changed to give rise to less specialised cells.
25

Undifferentiated cells are capable of multilineage differentiation - i.e. they are capable of differentiating into two or more types of specialised cells. A typical example of an undifferentiated cell is a stem cell.

30 In contrast, differentiated cells are incapable of multilineage differentiation. A typical example of a differentiated cell is a T cell.

There are many undifferentiated cells and differentiated cells found *in vivo* and the general art is replete with general teachings on them.

5 By way of example, reference may be made to *inter alia* Levitt and Mertelsman 1995 (Haematopoietic Stem Cells, published by Marcel Dekker Inc - especially pages 45-59) and Roitt *et al* (Immunology, 4th Edition, Eds. Roitt, Brostoff and Male 1996, Publ. Mosby - especially Chapter 10).

10 In short, however, examples of undifferentiated cells include lymphohaematopoietic progenitor cells (LPCs). LPCs include pluripotent stem cells (PSCs), lymphoid stem cells (LSCs) and myeloid stem cells (MSCs). LSCs and MSCs are each formed by the differentiation of PSCs. Hence, LSCs and MSCs are more committed than PSCs.

15 Examples of differentiated cells include T cells, B cells, eosinophils, basophils, neutrophils, megakaryocytes, monocytes, erythrocytes, granulocytes, mast cells, and lymphocytes.

T cells and B cells are formed by the differentiation of LSCs. Hence, T cells and B cells are more committed than LSCs.

20 Eosinophils, basophils, neutrophils, megakaryocytes, monocytes, erythrocytes, granulocytes, mast cells, NKs, and lymphocytes are formed by the differentiation of MSCs. Hence, each of these cells are more committed than MSCs.

25 Antigens are associated with undifferentiated and differentiated cells. The term "associated" here means the cells expressing or capable of expressing, or presenting or capable of being induced to present, or comprising, the respective antigen(s).

30 Most undifferentiated cells and differentiated cells comprise Major Histocompatibility Complex (MHC) Class I antigens and/or Class II antigens. If these antigens are associated with those cells then they are called Class I⁺ and/or Class II⁺ cells.

Each specific antigen associated with an undifferentiated cell or a differentiated cell can act as a marker. Hence, different types of cells can be distinguished from each other on the basis of their associated particular antigen(s) or on the basis of a particular combination of associated antigens.

5

Examples of these marker antigens include the antigens CD34, CD19 and CD3. If these antigens are present then these particular cells are called CD34⁺, CD19⁺ and CD3⁺ cells respectively. If these antigens are not present then these cells are called CD34⁻, CD19⁻ and CD3⁻ cells respectively.

10

In more detail, PSCs are CD34⁺ cells. LSCs are DR⁺, CD34⁺ and TdT⁺ cells. MSCs are CD34⁺, DR⁺, CD13⁺, CD33⁺, CD7⁺ and TdT⁺ cells. B cells are CD19⁺, CD21⁺, CD22⁺ and DR⁺ cells. T cells are CD2⁺, CD3⁺, and either CD4⁺ or CD8⁺ cells. Immature lymphocytes are CD4⁺ and CD8⁺ cells. Activated T cells are DR⁺ cells. Natural killer cells (NKs) are CD56⁺ and CD16⁺ cells. T lymphocytes are CD7⁺ cells. Leukocytes are CD45⁺ cells. Granulocytes are CD13⁺ and CD33⁺ cells. Monocyte macrophage cells are CD14⁺ and DR⁺ cells

15

Hence, by looking for the presence of the above-listed antigen markers it is possible to identify certain cell types (e.g. whether or not a cell is an undifferentiated cell or a differentiated cell) and the specialisation of that cell type (e.g. whether that cell is a T cell or a B cell).

20

The general concept of retrodifferentiation is not new. In fact, in 1976 Jose Uriel (Cancer Research 36, 4269-4275. November 1976) presented a review on this topic, in which he said:

25

"retrodifferentiation appears as a common adaptive process for the maintenance of cell integrity against deleterious agents of varied etiology (physical, chemical, and viral). While preserving the entire information encoded on its genome, cells undergoing retrodifferentiation lose morphological and functional complexity by

30

virtue of a process of self-deletion of cytoplasmic structures and the transition to a more juvenile pattern of gene expression. This results in a progressive uniformization of originally distinct cell phenotypes and to a decrease of responsiveness to regulatory signals operational in adult cells. Retrodifferentiation is normally counterbalanced by a process of reontogeny that tends to restore the terminal phenotypes where the reversion started. This explains why retrodifferentiation remains invariably associated to cell regeneration and tissue repair."

10 Uriel (*ibid*) then went on to discuss cases of reported retrodifferentiation - such as the work of Gurdon relating to nuclei from gut epithelial cells of *Xenopus* tadpoles (Advances in Morphogenesis [1966] vol 4, pp 1-43. New York Academic Press, Eds Abercrombie and Bracher), and the work of Bresnick relating to regeneration of liver (Methods in Cancer Research [1971] vol 6, pp 347-391).

15 Uriel (*ibid*) also reported on work relating to isolated liver parenchymal cells for *in vitro* cultures. According to Uriel:

20 "*Contrary to the results with fetal or neonatal hepatocytes, with hepatocytes from regenerating liver, or from established hepatomas, it has been difficult to obtain permanent class lines from resting adult hepatocytes.*"

25 Uriel (*ibid*) also reported on apparent retrodifferentiation in cancer, wherein he stated:

"*the biochemical phenotypes of many tumours show analogous changes of reversion toward immaturity ... during the preneoplastic phase of liver carcinogenesis, cells also retrodifferentiate.*"

30 More recent findings on retrodifferentiation include the work of Minoru Fukunda (Cancer Research [1981] vol 41, pp 4621-4628). Fukunda induced specific changes in the cell surface glycoprotein profile of K562 human leukaemic cells by use of the

tumour-promoting phorbol ester, 12-O-tetradecanoyl-phorbol-13-acetate (TPA). According to Fukuda TPA appeared to induce the K562 human leukaemic cells into a retrodifferentiated stage.

5 Also, Hass *et al* (Cell Growth & Differentiation [1991] vol 2, pp 541-548) reported that long term culture of TPA-differentiated U-937 leukaemia cells in the absence of phorbol ester for 32-36 days resulted in a process of retrodifferentiation and that the retrodifferentiated cells detached from the substrate and reinitiated proliferation.

10 Another case of retrodifferentiation is the work of Curtin and Snell (Br. J. Cancer [1983] vol 48, pp 495-505). These workers compared enzymatic changes occurring during diethylnitrosamine-induced hepatocarcinogenesis and liver regeneration after partial hepatectomy to normal liver differentiation. These workers found changes in enzyme activities during carcinogenesis that were similar to a step-wise reversal
15 of differentiation. According to these workers, their results suggest that an underlying retrodifferentiation process is common to both the process of hepatocarcinogenesis and liver regeneration.

More recently, Chastre *et al* (FEBS Letters [1985] vol 188, number 2, pp 2810-2811)
20 reported on the retrodifferentiation of the human colonic cancerous subclone HT29-18.

Even more recently, Kobayashi *et al* (Leukaemia Research [1994] vol 18, no. 12, pp 929-933) have reported on the establishment of a retrodifferentiated cell line (RD-1)
25 from a single rat myelomonocytic leukemia cell which differentiated into a macrophage-like cell by treatment with lipopolysaccharide (LPS).

According to the current understanding, as borne out by the teachings found on page 911 of Molecular Biology of the Cell (pub. Garland Publishers Inc. 1983) and more
30 recently Levitt and Mertelsman (*ibid*), a stem cell, such as a PSC, has the following four characteristics:

- i. it is an undifferentiated cell - i.e. it is not terminally differentiated;
- ii. it has the ability to divide without limit;
- iii. it has the ability to give rise to differentiated progeny, such as the differentiated cells mentioned earlier; and
- 5 iv. when it divides each daughter has a choice: it can either remain as PSC like its parent or it can embark on a course leading irreversibly to terminal differentiation.

Note should be made of the last qualification, namely that according to the general
10 teachings in the art once an undifferentiated cell has differentiated to a more committed cell it can not then retrodifferentiate. This understanding was even supported by the teachings of Uriel (*ibid*), Fukunda (*ibid*), Hass *et al* (*ibid*), Curtin and Snell (*ibid*), Chastre *et al* (*ibid*), and Kobayashi *et al* (*ibid*) as these workers retrodifferentiated certain types of differentiated cells but wherein those cells
15 remained committed to the same lineage and they did not retrodifferentiate into undifferentiated cells.

Therefore, according to the state of the art before the present invention, it was believed that it was not possible to form undifferentiated cells, such as stem cells,
20 from more committed cells. However, the present invention shows that this belief is inaccurate and that it is possible to form undifferentiated cells from more committed cells.

Thus, according to a first aspect of the present invention there is provided a method
25 of preparing an undifferentiated cell, the method comprising contacting a more committed cell with an agent that causes the more committed cell to retrodifferentiate into an undifferentiated cell.

According to a second aspect of the present invention there is provided a provided a
30 method comprising contacting a more committed cell with an agent that causes the more committed cell to retrodifferentiate into an undifferentiated cell; and then committing the undifferentiated cell to a recommitted cell.

The term "recommitted cell" means a cell derived from the undifferentiated cell - i.e. a new more committed cell.

5 According to a third aspect of the present invention there is provided an undifferentiated cell produced according to the method of the present invention.

According to a fourth aspect of the present invention there is provided an undifferentiated cell produced according to the method of the present invention as or in the preparation of a medicament.

10

According to a fifth aspect of the present invention there is provided the use of an undifferentiated cell produced according to the method of of the present invention in the manufacture of a medicament for the treatment of an immunological disorder or disease.

15

According to a sixth aspect of the present invention there is provided a recommitted cell produced according to the method of the present invention.

20 According to a seventh aspect of the present invention there is provided a recommitted cell produced according to the method of the present invention as or in the preparation of a medicament.

25 According to an eighth aspect of the present invention there is provided the use of a recommitted cell produced according to the method of of the present invention in the manufacture of a medicament for the treatment of an immunological disorder or disease.

30 According to a ninth aspect of the present invention there is provided a more committed cell having attached thereto an agent that can cause the more committed cell to retrodifferentiate into an undifferentiated cell.

According to a tenth aspect of the present invention there is provided a CD19⁺ and CD3⁺ cell.

5 Thus, in its broadest sense, the present invention is based on the highly surprising finding that it is possible to form an undifferentiated cell from a more committed cell.

The present invention is highly advantageous as it is now possible to prepare undifferentiated cells from more committed cells and then use those undifferentiated cells as, or to prepare, medicaments either *in vitro* or *in vivo* or combinations thereof
10 for the treatments of disorders.

The present invention is also advantageous as it is possible to commit the undifferentiated cell prepared by retrodifferentiation to a recommitted cell, such as a new differentiated cell, with a view to correcting or removing the original more
15 committed cell or for correcting or removing a product thereof.

Preferably, the more committed cell is capable of retrodifferentiating into an MHC Class I⁺ and/or an MHC Class II⁺ undifferentiated cell.

20 Preferably, the more committed cell is capable of retrodifferentiating into an undifferentiated cell comprising a stem cell antigen.

Preferably, the more committed cell is capable of retrodifferentiating into a CD34⁺ undifferentiated cell.

25

Preferably, the more committed cell is capable of retrodifferentiating into a lymphohaematopoietic progenitor cell.

30 Preferably, the more committed cell is capable of retrodifferentiating into a pluripotent stem cell.

The undifferentiated cell may comprise any components that are concerned with antigen presentation, capture or recognition. Preferably, the undifferentiated cell is an MHC Class I⁺ and/or an MHC Class II⁺ cell.

5 Preferably, the undifferentiated cell comprises a stem cell antigen.

Preferably, the undifferentiated cell is a CD34⁺ undifferentiated cell.

Preferably, the undifferentiated cell is a lymphohaematopoietic progenitor cell.

10

Preferably, the undifferentiated cell is a pluripotent stem cell.

The more committed cell may comprise any components that are concerned with antigen presentation, capture or recognition. Preferably, the more committed cell is an MHC Class I⁺ and/or an MHC Class II⁺ cell.

15

Preferably, the agent acts extracellularly of the more committed cell.

Preferably, the more committed cell comprises a receptor that is operably engageable by the agent and wherein the agent operably engages the receptor.

20

Preferably, the receptor is a cell surface receptor.

Preferably, the receptor comprises an α - component and/or a β - component.

25

Preferably, the receptor comprises a β -chain having homologous regions.

Preferably, the receptor comprises at least the homologous regions of the β -chain of HLA-DR.

30

Preferably, the receptor comprises an α -chain having homologous regions.

Preferably, the receptor comprises at least the homologous regions of the α -chain of HLA-DR.

Preferably, the agent is an antibody to the receptor.

5

Preferably, the agent is a monoclonal antibody to the receptor.

Preferably, the agent is an antibody, preferably a monoclonal antibody, to the homologous regions of the β -chain of HLA-DR.

10

Preferably, the agent is an antibody, preferably a monoclonal antibody, to the homologous regions of the α -chain of HLA-DR.

Preferably, the agent is used in conjunction with a biological response modifier.

15

Preferably, the biological response modifier is an alkylating agent.

Preferably, the alkylating agent is or comprises cyclophosphamide.

20

In one preferred embodiment, the more committed cell is a differentiated cell.

Preferably, the more committed cell is any one of a B cell or a T cell.

In an alternative preferred embodiment, the more committed cell is a more mature undifferentiated cell.

25

In one preferred embodiment, when the undifferentiated cell is committed to a recommitted cell the recommitted cell is of the same lineage as the more committed cell prior to redifferentiation.

30

In another preferred embodiment, when the undifferentiated cell is committed to a recommitted cell the recommitted cell is of a different lineage as the more committed

cell prior to retrodifferentiation.

Preferably, the recommitted cell is any one of a B cell, a T cell or a granulocyte.

5 Preferably, the method is an *in vitro* method.

Preferably, the agent modulates MHC gene expression, preferably wherein the agent modulates MHC Class I⁺ and/or MHC Class II⁺ expression.

10 The agent operably engages the more committed cell in order to retrodifferentiate that cell into an undifferentiated cell. In this regard, the agent for the retrodifferentiation of the more committed cell into the undifferentiated cell may act in direct engagement or in indirect engagement with the more committed cell.

15 An example of direct engagement is when the more committed cell has at least one cell surface receptor on its cell surface, such as a β -chain having homologous regions (regions that are commonly found having the same or a similar sequence) such as those that may be found on B cells, and wherein the agent directly engages the cell surface receptor. Another example, is when the more committed cell has a cell
20 surface receptor on its cell surface such as an α -chain having homologous regions such as those that may be found on T cells, and wherein the agent directly engages the cell surface receptor.

25 An example of indirect engagement is when the more committed cell has at least two cell surface receptors on its cell surface and engagement of the agent with one of the receptors affects the other receptor which then induces retrodifferentiation of the more committed cell.

30 The agent for the retrodifferentiation of the more committed cell into an undifferentiated cell may be a chemical compound or composition. Preferably, however, the agent is capable of engaging a cell surface receptor on the surface of the more committed cell. For example, preferred agents include any one or more of

cyclic adenosine monophosphate (cAMP), a CD4 molecule, a CD8 molecule, a part or all of a T-cell receptor, a ligand (fixed or free), a peptide, a T-cell receptor (TCR), an antibody, a cross-reactive antibody, a monoclonal antibody, or a polyclonal antibody.

5

If the agent is an antibody, a cross-reactive antibody, a monoclonal antibody, or a polyclonal antibody, then preferably the agent is any one or more of an antibody, a cross-reactive antibody, a monoclonal antibody, or a polyclonal antibody to any one or more of: the β chain of a MHC class II antigen, the β chain of a MHC HLA-DR antigen, the α chain of a MHC class I or class II antigen, the α chain of HLA-DR antigen, the α and the β chain of MHC class II antigen or of a MHC class I antigen. An example of a suitable antibody is CR3/43 (supplied by Dako).

10

15

The more committed cell is any cell derived or derivable from an undifferentiated cell.

20

Thus, in one preferred embodiment, the more committed cell is also an undifferentiated cell. By way of example therefore the undifferentiated cell can be a lymphoid stem cell or a myeloid stem cell, and the undifferentiated cell is a pluripotent stem cell.

25

In another preferred embodiment, the more committed cell is a differentiated cell, such as a CFC-T cell, a CFC-B cell, a CFC-Eosin cell, a CFC-Bas cell, a CFC-Bas cell, a CFC-GM cell, a CFC-MEG cell, a BFC-E cell, a CFC-E cell, a T cell, a B cell, an eosinophil, a basophil, a neutrophil, a monocyte, a megakaryocyte or an erythrocyte; and the undifferentiated cell is a myeloid stem cell, a lymphoid stem cell or a pluripotent stem cell.

30

If the more committed cell is a differentiated cell then preferably the differentiated cell is a B lymphocyte (activated or non-activated), a T lymphocyte (activated or non-activated), a cell from the macrophage monocyte lineage, a nucleated cell capable of expressing class I or class II antigens, a cell that can be induced to express class I or

class II antigens or an enucleated cell (i.e. a cell that does not contain a nucleus - such as a red blood cell).

5 In alternative preferred embodiments, the differentiated cell is selected from any one of a group of cells comprising large granular lymphocytes, null lymphocytes and natural killer cells, each expressing the CD56 and/or CD16 cell surface receptors.

The differentiated cell may even be formed by the nucleation of an enucleated cell.

10 The agent may act intracellularly within the more committed cell. However, preferably, the agent acts extracellularly of the more committed cell.

15 In a preferred embodiment, agent operably engages a receptor present on the surface of the more committed cell - which receptor may be expressed by the more committed cell, such as a receptor that is capable fo being expressed by the more committed cell.

20 Preferably, the receptor is a Class I or a Class II antigen of the major histocompatibility complex (MHC). In preferred embodiments the cell surface receptor is any one of: an HLA-DR receptor, a DM receptor, a DP receptor, a DQ receptor, an HLA-A receptor, an HLA-B receptor, an HLA-C receptor, an HLA-E receptor, an HLA-F receptor, or an HLA-G receptor.

25 In more preferred embodiments the cell surface receptor is an HLA-DR receptor.

30 Preferably the contacting step comprises the agent engaging with any one or more of the following: homologous regions of the α -chain of class I antigens, homologous regions of the α -chain of class II antigens, a CD4 cell surface receptor, a CD8 cell surface receptor, homologous regions of the β -chain of class II antigens in the presence of lymphocytes, homologous regions of the α -chain of class I antigens in the presence of lymphocytes, or homologous regions of the α -chain of class II antigens in the presence of lymphocytes.

Preferably the contacting step occurs in the presence of the biological response modifier.

5 Preferably the biological response modifier is any one or more of a modulator, such as an immunomodulator, a growth factor, a cytokine, a cell surface receptor, a hormone, a nucleic acid, a nucleotide sequence, an antigen or a peptide.

In a preferred embodiment of the present invention the undifferentiated cell is then committed into a recommitted cell, such as a differentiated cell.

10

The recommitted cell may be of the same lineage to the more committed cell from which the undifferentiated cell was derived.

15 Alternatively, the recommitted cell may be of a different lineage to the more committed cell from which the undifferentiated cell was derived.

In addition, the present invention also encompasses the method of the present invention for preparing an undifferentiated cell, wherein the method includes committing the undifferentiated cell into a recommitted cell and then fusing the
20 recommitted cell to a myeloma. This allows the expression *in vitro* of large amounts of the desired product, such as an antibody or an antigen or a hormone etc.

Other aspects of the present invention include:

25 The use of any one of the agents of the present invention for preparing an undifferentiated cell from a more committed cell.

30 The use of an undifferentiated cell produced according to the method of the present invention for producing any one of a monoclonal or a polyclonal or a specific antibody from a B-lymphocyte or a T-lymphocyte; a cell from the macrophage monocyte lineage; a nucleated cell capable of expressing class I or class II antigens; a cell capable of being induced to express class I or class II antigens; an enucleated

cell; a fragmented cell; or an apoptic cell.

5 The use of an undifferentiated cell produced according to the method of the present invention for producing effector T-lymphocytes from B-lymphocytes and/or *vice versa*.

10 The use of an undifferentiated cell produced according to the method of the present invention for producing any one or more of: a medicament, such as a medicament comprising or made from a B-lymphocyte, a T-lymphocyte, a cell from the macrophage monocyte lineage, a nucleated cell capable of expressing a class I or a class II antigen, a cell capable of being induced to express a class I or a class II antigen, or an enucleated cell.

15 The present invention also encompasses processes utilising the afore-mentioned uses and products or compositions prepared from such processes.

20 The present invention also encompasses a medicament comprising an undifferentiated cell according to the present invention or a product obtained therefrom admixed with a suitable diluent, carrier or excipient.

In one preferred embodiment the medicament comprises an antibody or antigen obtained from an undifferentiated cell according to the present invention admixed with a suitable diluent, carrier or excipient.

25 Preferably the medicament is for the treatment of any one of: cancer, autoimmune diseases, blood disorders, cellular or tissue regeneration, organ regeneration, the treatment of organ or tissue transplants, or congenital metabolic disorders.

30 In a preferred embodiment the present invention relates to a process of introducing a gene into the genome of an undifferentiated cell, wherein the process comprises introducing the gene into a more committed cell, and then preparing an undifferentiated cell by the method according to the present invention, whereby the

gene is present in the undifferentiated cell.

5 In a more preferred embodiment the present invention relates to a process of introducing a gene into the genome of an undifferentiated cell, wherein the process comprises inserting the gene into the genome of a more committed cell, and then preparing an undifferentiated cell by the method according to the present invention, whereby the gene is present in the undifferentiated cell.

10 In an even more preferred embodiment the present invention relates to a process of introducing the genome of a gene into an undifferentiated cell, wherein the process comprises inserting the gene into the genome of a more committed cell, and then preparing an undifferentiated cell by the method according to the present invention, whereby the gene is present in the genome of the undifferentiated cell.

15 The present invention encompasses an undifferentiated cell prepared by any one of these processes of the present invention.

20 As already mentioned, the present invention also encompasses a medicament comprising an undifferentiated cell prepared by any one of these processes admixed with a suitable diluent, carrier or excipient. With such a medicament the undifferentiated cell could be used to produce a beneficial more committed cell, such as one having a correct genomic structure, in order to alleviate any symptoms or conditions brought on by or associated with a more committed cell having an incorrect genomic structure.

25

Thus, the present invention also provides a process of removing an acquired mutation from a more committed cell wherein the method comprises forming an undifferentiated cell by the method according to the present invention, committing the undifferentiated cell into a recommitted cell, whereby arrangement or rearrangement of the genome and/or nucleus of the cell causes the mutation to be removed.

30

Preferably the gene is inserted into the immunoglobulin region or TCR region of the genome.

5 Alternatively, the undifferentiated cell could be used to produce a more committed cell that produces an entity that cures any symptoms or conditions brought on by or associated with a more committed cell having an incorrect genomic structure.

10 For example, the present invention may be used to prepare antibodies or T cell receptors to an antigen that is expressed by the more committed cell which has retrodifferentiated into the undifferentiated cell. In this regard, the antigen may be a fetospecific antigen or a cross-reactive fetospecific antigen.

15 The present invention also includes a process of controlling the levels of undifferentiated cells and more committed cells. For example, the present invention includes a method comprising forming an undifferentiated cell by the method according to the present invention and then activating an apoptosis gene to affect the undifferentiated cell, such as bring about the death thereof.

20 In one preferred embodiment of the present invention, the more committed cell is not a cancer cell. In another preferred embodiment of the present invention, the agent is neither carcinogenic nor capable of promoting cancer growth.

25 The present invention also covers a method of treating a patient suffering from a disease or a disorder resulting from a defective cell or an unwanted cell, the method comprising preparing an undifferentiated cell by contacting a more committed cell with an agent that causes the more committed cell to retrodifferentiate into the undifferentiated cell, and then optionally committing the undifferentiated cell into a recommitted cell; wherein the undifferentiated cell, or the recommitted cell, affects the defective cell or the unwanted cell to alleviate the symptoms of the disease or disorder or to cure the patient of the disease or condition.

30

In summation, the present invention relates to the preparation of an undifferentiated cell from a more committed cell.

5 The present invention will now be described by way of example, in which reference shall be made to the following Figures:

Figure 1 which is a microscope picture of cells before the method of the present invention;

10 Figure 2 which is a microscope picture of cells prepared by the method of the present invention;

Figure 3 which is a microscope picture of cells prepared by the method of the present invention but at a lower magnification;

15 Figure 4 which is a microscope picture of cells before the method of the present invention;

Figure 5 which is a microscope picture of cells prepared by the method of the present invention; and

20 Figure 6 which is a microscope picture of cells prepared by the method of the present invention.

25 A. MATERIALS AND METHODS

PATIENTS

30 Blood samples were obtained in lavender top tubes containing EDTA from patients with B-cell chronic lymphocytic leukaemia's, patients with antibody deficiency (including IgA deficiency and X-linked infantile hypogammaglobulinaemias), patients with HIV infections and AIDS syndrome, a patient with CMV infection, a patient with Hodgkin's lymphomas, a patient with acute T-cell leukaemia, a 6-days old baby

with Hodgkin's lymphomas, a patient with acute T-cell leukaemia, a 6-days old baby with blastocytosis, various patients with various infections and clinical conditions, cord blood, bone marrow's, and enriched B-lymphocyte preparations of healthy blood donors.

5

CLINICAL AND EXPERIMENTAL CONDITIONS

The clinical and experimental treatment conditions of patients, including various types of treatment applied to their blood samples, are described in Table 1. Differential white blood cell (WBC) counts were obtained using a Coulter Counter and these are included in the same Table.

10

TREATMENT OF BLOOD

15

Blood samples, once obtained, were treated with pure monoclonal antibody to the homologous region of the β -chain of the HLA-DR antigen (DAKO) and left to mix on a head to head roller at room temperature for a maximum of 24 hours. Some samples were mixed first on a head to head roller for 15 minutes after which they were left to incubate in an incubator at 22°C. The concentration of monoclonal antibody added to blood samples varied from 10-50 μ l/ml of blood.

20

In addition, other treatments were applied at the same concentrations and these included addition of a monoclonal antibody to the homologous of the α -chain of the HLA-DR antigen, a monoclonal antibody to the homologous region of class I antigens, a monoclonal antibody to CD4, a monoclonal antibody to CD8, and a PE conjugated monoclonal antibody to the homologous region of the β -chain of the HLA-DR antigen.

25

Other treatments included the simultaneous addition of monoclonal antibodies to the homologous regions of the α and β -chains of the HLA-DR antigen to blood samples.

30

Furthermore, alkylating agents such as cyclophosphamide were added to blood samples in combination with pure monoclonal antibody to the homologous region of

the β -chain of the HLA-DR antigen.

Following these treatments blood samples were stained with panels of labelled monoclonal antibodies as instructed by the manufacturer's instructions and then
5 analyzed using flow cytometry.

Incubation periods with monoclonal antibodies ranged from 2 hour, 4 hour, 6 hour, 12 hour to 24 hour intervals.

10 LABELLED ANTIBODIES

The following monoclonal antibodies were used to detect the following markers on cells by flow cytometry: CD19 and CD3, CD4 and CD8, DR and CD3, CD56 & 16 and CD3, CD45 and CD14, CD8 and CD3, CD8 and CD28, simultest control
15 (IgG1 FITC + IgG2a PE), CD34 and CD2, CD7 and CD13 & 33, CD10 and CD25, CD5 and CD10, CD5 and CD21, CD7 and CD5, CD13 and CD20, CD23 and CD57 and CD25 and CD45 RA (Becton & dickenson and DAKO).

Each patient's blood sample, both treated and untreated, was analyzed using the
20 majority of the above panel in order to account for the immunophenotypic changes that accompanied different types of treatments and these were carried out separately on different aliquots of the same blood sample. Untreated samples and other control treatments were stained and analyzed simultaneously.

25 FLOW CYTOMETRY

Whole blood sample was stained and lysed according to the manufacturer instructions. Flow cytometry analysis was performed on a FACScan@ with either simultest or PAINT A GATE software (BDIS) which included negative controls back tracking.
30 10,000 to 20,000 events were acquired and stored in list mode files.

MORPHOLOGY

Morphology was analyzed using microscopy and Wright's stain.

5 B. RESULTS

CD19 AND CD3 PANEL

10 Treatment of blood samples with monoclonal antibody to the homologous region of the β -chain of the HLA-DR antigen always decreased the relative number of CD19⁺ cells. This marker is a pan B-cell antigen (see Table). This antigen is present on all human B lymphocytes at all stages of maturation but is lost on terminally differentiated plasma cells. Hence, this is an indication that B cells were retrodifferentiating into undifferentiated cells.

15

The same treatment caused the relative number of CD3⁺ cells to increase dramatically especially in blood of patients with B-CLL, which was always accompanied by an increase in the relative number in CD3⁺CD19⁻ cells. CD3 is present on all mature T-lymphocytes and on 65%-85% of thymocytes. This marker is always found in association with α -/ β - or gamma/delta T-cell receptors (TCR) and together these complexes are important in transducing signals to the cell interior. Hence, this is an indication that B cells were retrodifferentiating into undifferentiated cells and then being committed to new differentiated cells, namely T cells.

20

25 A novel clone of cells appeared in treated blood of B-CLL patients co-expressing the CD19 and CD3 markers - i.e. CD19⁺ and CD3⁺ cells (see Charts 1, patient 2, 3 & 4 at 2hr, 6hr & 24hr of starting treatment). Other patients with different conditions showed an increase in the relative number of these clones of cells. These cells were exceptionally large and heavily granulated and extremely high levels of CD19 were expressed on their cell membrane. The CD3 marker seems to be expressed on these cells at similar levels to those expressed on normal mature lymphocytes.

30

In Table 2, patient numbers 2, 3 and 4 are actually numbers representing the same patient and their delineation was merely to show the effect of treatment on blood with time (See Table 1 for experimental and clinical condition of this patient).

5 The CD19⁺CD3⁺ clones in treated samples seem to decrease with time, reaching original levels to those determined in untreated sample at 2hrs, 6hrs and 24hrs time.

Another type of cell of the same size and granularity was detected in treated samples and these cells had high levels of CD19 expressed on their surface but were negative
10 for the CD3 marker and rich in FC receptors. However, the relative number of these cells appeared to decrease in time. Of interest, at 24 hours treatment of blood sample (2, 3 and 4) there was a decrease in the relative number of CD19⁺CD3⁻ cells in a group of cells that were initially observed to increase after 2 and 6 hr's treatment of blood samples. However, Coulter counts of WBC populations were reduced on
15 treatment of blood with monoclonal antibody to the homologous region of the β -chain of the HLA-DR antigen. This finding suggests that this type of treatment gives rise to atypical cells that cannot be detected by Coulter (Table 1) but can be accounted for when measured by flow cytometry which counts cells on the basis of surface markers, size and granularity. Furthermore, these atypical cells were accounted for by analysing
20 morphology using Wright's stain under a microscope. Flow cytometric charts of these phenomena are represented in Charts (1, 2, 3 & 4) and the immunophenotypic changes obtained on treatment of blood samples seems to suggest that CD19⁺ and CD3⁺ lymphocytes are an interconnected group of cells but remain distinct on the basis of CD19 and CD3 relative expression compared to stem cells.

25

In Table 2, patient numbers 5 and 6 represent the same patient but analysis of treated and untreated blood samples were monitored with time and at the same time (see Table 1).

30 Patients blood with no B-cell malignancy showed similar trends of immunophenotypic changes when compared to blood of B-CLL patients but the changes were not to the same extent. However, the relative and absolute number of B-lymphocytes and MHC

class II positive cells in the blood of these patients are extremely low compared to those found in the blood of B-CLL patients.

5 Two brothers both with X-linked infantile hypogammaglobulinemia who were B cell deficient showed different immunophenotypic changes in the relative number of CD3⁺ cells on treatment of their blood. The younger brother who was 2 months old and not ill, on treatment of his blood, showed a slight increase in the relative number of CD3⁺ cells which was accompanied by a decrease in the relative number of CD3⁻CD19⁻ cells. On the other hand, the other brother who was 2 years old and was 10 extremely sick and with a relatively high number of activated T cells expressing the DR antigens showed a decrease in the number of CD3⁺ cells on treatment of his blood. No other markers were used to measure other immunophenotypic changes that might have occurred because the blood samples obtained from these two patients were extremely small (Table 2, ID 43/BD and 04/BD).

15 Patient 91 in Table 2 shows a decrease in the relative number of CD3⁺ cells following treatment of blood which was accompanied by an increase in the relative number of CD3⁻CD19⁻ cells. However, on analysis of other surface markers such as CD4 and CD8 (see Table 3) the patient was observed to have a high relative number 20 of CD4⁺CD8⁺ cells in his blood and this was noted prior to treatment of blood samples with monoclonal antibody to the β -chain of the DR antigen and these double positive cells decreased appreciably following treatment of blood. Furthermore, when further markers were analyzed the relative number of CD3⁺ cells were seen to have elevated (See Table 4).

25 An enriched preparation of B-lymphocytes obtained from healthy blood donors when treated with monoclonal antibody to the β -chain of DR antigens showed a dramatic increase in the relative number of CD3⁺ cells which were always accompanied by a decrease in the relative number of CD19⁺ cells and by an increase in the relative 30 number of CD19⁻CD3⁻ cells. Further analysis using markers such as CD4 and CD8 show a concomitant increase in the relative number of these markers. However, an enriched preparation of T lymphocytes of the same blood donors when treated with

the same monoclonal antibody did not show the same changes.

CD4 AND CD8 PANEL

5 The CD4 antigen is the receptor for the human immunodeficiency virus. The CD4
molecule binds MHC class II antigen in the B2 domain, a region which is similar to
the CD8 binding sites on class I antigens. Binding of CD4 to class II antigen
enhances T cell responsiveness to antigens and so does the binding of CD8 to class
10 I antigens. The CD8 antigens are present on the human suppressor/cytotoxic T-
lymphocytes subset as well as on a subset of natural killer (NK) lymphocytes and a
majority of normal thymocytes. The CD4 and CD8 antigens are coexpressed on
thymocytes and these cells lose either markers as they mature into T-lymphocytes.

15 On analysis of the CD4 and CD8 markers - see below - and from a majority of blood
samples presented in Table 2, a pattern of staining emerges which supports the
presence of a retrodifferentiation process of B-lymphocytes into undifferentiated cells
and the subsequent differentiation into T-lymphocytes.

20 CD4⁺CD8⁺ cells, which are double positive cells, always appeared following
treatment of blood samples with monoclonal antibody to the homologous region of the
 β -chain and these types of cells were markedly increased in the blood of treated
samples of patients with B-CLL and which were absent altogether in untreated
samples (See Table 3 and Charts 1, 2 3 & 4). In the same specimens the relative
number of single positive cells such as CD8⁺ and CD4⁺ cells was also noted to
25 increase simultaneously. Furthermore, a decrease in the relative number of CD4⁻
CD8⁻ cells which, at least in the case of B-CLL correspond to B cells was noted to
fall dramatically in treated samples when compared to untreated specimens which
remained at the same level when measured with time. However, measurement of the
relative number of CD4⁺CD8⁺ cells with time in treated samples showed that there
30 was a concomitant increase in the number of single positive cells with a decrease in
the relative number of double positive cells. This type of immunophenotypic change
is characteristic of thymic development of progenitor cells of the T-lymphocyte

lineage in the thymus (Patient number 2,3 and 4). The CD4 antigen is present on the helper/inducer T- lymphocyte subsets (CD4⁺CD3⁺) and a majority of normal thymocytes. However, this antigen is present in low density on the cell surface of monocytes and in the cytoplasm of monocytes and macrophages (CD3⁻CD4⁺).

5

The relative number of CD4⁺ low cells was affected differently in different blood samples following treatment. The relative number of this type of cells seems unaffected in blood samples of patients with B-CLL following treatment when compared to untreated samples. Such low levels of CD4 expression is found on monocytes and very early thymocytes.

10

Patient HIV⁺25 on treatment showed a substantial increase in the number of double positive cells expressing CD4 and CD8 simultaneously. On the other hand, patient 91 on treatment showed a decrease in this subtype of cells and the observation of such phenomenon is time dependent. The relative number of CD8⁺ cells was observed to increase in untreated blood samples of patients with B-CLL when measured with time whereas the relative number of CD4⁺ and CD4⁺ low cells was observed to decrease at the same times (Table 3 patient 2,3 and 4).

15

20 DR AND CD3 PANEL

The DR markers are present on monocytes, dendritic cells, B-cells and activated T-lymphocytes.

25

Treated and untreated samples analysed with this panel showed similar immunophenotypic changes to those obtained when blood samples were analysed with the CD19 and CD3 markers (see Table 2) and these antigens as mentioned earlier are pan B and T-cell markers respectively.

30

Treatment of blood with monoclonal antibodies seems to affect the relative number of DR⁺ B-lymphocytes so that the level of DR⁺ cells decrease. In contrast, the relative number of CD3⁺ (T-cells) cells increase significantly (see Table 4 and Chart).

Furthermore, the relative number of activated T cells increased in the majority of treated blood samples of patients with B-CLL and these types of cells were affected variably in treated samples of patients with other conditions. Furthermore, the relative number of DR high positive cells appeared in significant numbers in treated samples of patients with B-CLL and a 6 day old baby with increased DR⁺ CD34⁺ blasts in his blood. However, it should be noted that the blasts which were present in this patient's blood were negative for T and B-cell markers before and after treatment but became more positive for myeloid lineage antigens following treatment. The relative number of CD3⁺DR⁻ cells increased in the majority of treated blood samples and was proportional to increases in the relative number of CD3⁺ cells (T-cells) and was inversely proportional to decreases in the relative number of DR⁺ cells (B-cells).

CD56&16 AND CD3 PANEL

The CD56&CD16 markers are found on a heterogeneous group of cells, a subset of lymphocytes known generally as large granular lymphocytes and natural killer (NK) lymphocytes. The CD16 antigen is expressed on virtually all resting NK lymphocytes and is weakly expressed on some CD3⁺ T lymphocytes from certain individuals. This antigen is found on granulocytes in lower amount and is associated with lymphocytes containing large azurophilic granules. The CD16 antigen is the IgG FC receptor III.

A variable number of CD16⁺ lymphocytes coexpress either the CD57 antigen or low-density CD8 antigen or both. In most individuals, there is virtually no overlap with other T-lymphocyte antigens such as the CD5, CD4, or CD3 antigens. The CD56 antigen is present on essentially all resting and activated CD16⁺ NK lymphocytes and these subsets of cells carry out non-major histocompatibility complex restricted cytotoxicity.

Immunophenotyping of treated and untreated blood samples of B-CLL and some other patients with other conditions showed an increase in the relative number of cells

coexpressing the CD56&CD16 antigens which were heavily granulated and of medium size (see Table 5 and Charts 1, 2, 3 & 4). These observations were also accompanied by a marked increase in the relative number of cells expressing the CD3 antigen only (without the expression of CD56 and CD16 markers) and cells coexpressing the CD56&CD16 and CD3 markers together.

In Table 5, patient numbers 2, 3, and 4 represent the same blood sample but being analysed at 2 hours, 6 hours and 24 hours respectively (before and after treatment). This sample shows that treatment of blood with monoclonal antibody to the homologous region of the β -chain of DR antigen seems to cause spontaneous production of CD56⁺ and CD16⁺ cells, CD3⁺ cells and CD56⁺ and CD16⁺ CD3⁺ cells and these observations were always accompanied by the disappearance of B-cell markers (CD19, DR, CD56, CD16⁺CD3⁺).

Onward analysis of this blood sample before and after treatment showed the levels of CD56⁺ and CD16⁺ cells to decrease with time and the level of CD3⁺ cells to increase with time.

Blood samples of patient 7 with B-CLL, did not show any changes in the number of cells expressing the CD56, CD16 and CD3 antigens when compared to immunophenotypic changes observed in treated and untreated samples and this is because the amount of monoclonal antibody added was extremely low relative to the number of B lymphocytes. However, treatment of this patient's blood sample on a separate occasion with an appropriate amount of monoclonal antibody showed significant increases in the relative number of CD3⁺, CD56⁺ & CD16⁺ and CD56⁺ and CD16⁺ CD3⁺ cells.

Blood samples of other patients with other conditions showed variable changes in the level of these cells and this seems to be dependent on the number of B-lymphocytes present in blood before treatment, duration of treatment and probably the clinical condition of patients.

CD45 AND CD14 PANEL

The CD45 antigen is present on all human leukocytes, including lymphocytes, monocytes, polymorphonuclear cells, eosinophils, and basophils in peripheral blood, thymus, spleen, and tonsil, and leukocyte progenitors in bone marrow.

The CD14 is present on 70% to 93% of normal peripheral blood monocytes, 77% to 90% of pleural or peritoneal fluid phagocytes. This antigen is weakly expressed on granulocytes and does not exist on unstimulated lymphocytes, mitogen-activated T lymphocytes, erythrocytes, or platelets.

The CD45 antigen represents a family of protein tyrosine phosphatases and this molecule interacts with external stimuli (antigens) and effects signal transduction via the Src-family members leading to the regulation of cell growth and differentiation.

Engagement of the β -chain of the DR antigens in treated blood samples especially those obtained from patients with B-CLL suggests that such a treatment affects the level of CD45 antigens on B-lymphocytes. The overall immunophenotypic changes that took place on stimulation of the β -chain of the DR antigen seem to give rise to different types of cells that can be segregated on the basis of the level of CD45 and CD14 expression as well as morphology as determined by forward scatter and side scatter (size and granularity respectively) and these results are presented in Table 6 and Charts (1, 2, 3, 4 & 5).

On treatment the relative number of CD45 low cells (when compared to untreated samples) increased significantly and so did the relative number of cells co-expressing the CD45 and CD14 antigens. This type of immunophenotypic changes coincided with a decrease in the relative number of CD45 high cells (compared to untreated samples). However, this latter population of cells can be further divided on the basis of morphology and the degree of CD45 expression. One type was extremely large and had extremely high levels of CD45 antigen when compared to the rest of cells present in the charts (see charts 1, 2, 3 and 4). On analysis of this panel following

treatment with time (see Table patient 2,3 and 4 and charts) the relative number of CD45⁺ cells initially fell drastically with time to give rise to CD45 low cells. However, analysis of blood 24 hours later showed the opposite situation.

5 Samples 5 and 7 reveal opposite immunophenotypic changes to those obtained with other samples obtained from other B-CLL patients and this is because the samples were analysed at a much earlier incubation time with the monoclonal antibody. In fact the sequential analysis of blood samples after treatment seems to suggest that the immunophenotypic changes undertaken by B lymphocytes is time dependent because
10 it represents a stage of development and the immunophenotypic changes measured at time X is not going to be the same at time X plus (its not fixed once induced). However, these types of changes must be occurring in a more stringent manner in the body otherwise immunopathology would ensue. The effect of treatment of blood samples from other patients with no B-cell malignancy show variable changes in
15 immunophenotypes of cells and this because B-lymphocytes are present in lower amount. However, treatment of enriched fractions of B-lymphocytes obtained from healthy blood donors show similar immunophenotypic changes to those obtained with B-CLL with high B lymphocyte counts.

20 CD8 AND CD3 PANEL

The CD8 antigenic determinant interacts with class I MHC molecules, resulting in increased adhesion between the CD8⁺ T lymphocytes and the target cells. This type of interaction enhances the activation of resting lymphocytes. The CD8 antigen is
25 coupled to a protein tyrosine kinase (p56lck) and in turn the CD8/p56lck complex may play a role in T-lymphocyte activation.

Treatment of blood samples obtained from patients with B-CLL with monoclonal antibody to the B chain causes a significant increase in the relative number of
30 CD3CD8 and CD3 (highly likely to be CD4CD3) positive cells thus indicating more clearly that double positive cells generated initially are undergoing development into mature T-lymphocytes. This is a process that can be measured directly by CD19 and

by DR and indirectly by CD8⁺CD3⁻ antigens. Serial assessment of treated blood samples of the same patient with time seems to agree with a process which is identical to thymocyte development (Table 7, patient 2, 3 and 4 and Chart 1).

- 5 The relative number of CD8⁺ cells increased with time in treated and untreated samples but to a higher extent in untreated samples. On the other hand, the relative number of CD8⁺CD3⁺ cells decreased with time in untreated samples. However, the relative number of CD3⁺ cells increased in treated blood samples when measured with time and these types of cells highly correspond to CD4⁺CD3⁺ single positive cells; a maturer form of thymocytes. In addition, since these samples were also immunophenotyped with other panels (mentioned above in Tables 3, 4, 5 and 6) the overall changes extremely incriminate B cells in the generation of T lymphocyte progenitors and progenies.
- 10
- 15 Blood samples from a patient with B-CLL (number 2, 3 and 4 Tables 1, 2, 3, 4, 5, 6, 7) in separate aliquots were treated with nothing, PE conjugated monoclonal antibody to the homologous region of the β -chain of DR antigen and unconjugated form of the same monoclonal antibody. On comparison of PE conjugated treatment clearly indicates no change in the relative number of CD3 positive cells and associated markers such as CD4 which have been observed in significant levels when the same blood sample was treated with unconjugated form of the antibody. However, an increase in the number of CD45 positive cells with no DR antigen being expressed on their surface was noted when measured with time (see Table 8). A finding that was similar to that noted in untreated samples when immunophenotyped with time (Table 6). Furthermore, the relative number of cells expressing CD45 low decreased in time, a phenomenon which was also noted in the untreated samples (when measured with time) of the same patient (see chart 1A).
- 20
- 25

C. COMPARISON OF THE EFFECT OF OTHER MONOCLONAL ANTIBODIES WITH DIFFERENT SPECIFICITY ON T-LYMPHOPHOIESIS

5 **CD19 AND CD3 PANEL**

Treatment of blood samples with monoclonal antibody to the homologous region of the α -chain of the DR antigen and the homologous region of MHC Class I antigens decreased the number of CD3⁺ cells and increased the number of CD19⁺ cells. Treatment of the same blood with monoclonal antibody to the homologous region of the β -chain of the DR antigen decreased the number of CD19⁺ cells and increased the number of CD3⁺ cells. Treatment with the latter monoclonal antibody with cyclophosphamide revealed the same effect (Table 14 patient 5/6 with B-CLL at 2hr treatment).

15 Onward analysis of CD19⁺ and CD3⁺ cells in the same samples revealed further increases in the relative number of CD3⁺ cells only in blood treated with monoclonal antibody to the homologous region of the β -chain of DR antigen (Table 14 patient 5/6 at 24 hours following treatment). However, onward analysis (24 hours later patient 5/6 Table 14) of blood samples treated with cyclophosphamide plus monoclonal antibody to the β -chain of DR antigen show reversal in the relative number of CD19⁺ and CD3⁺ cells when compared to that observed at 2 hour incubation time under exactly the same condition.

25 In general, treatment of blood samples of the same patient with monoclonal antibody to the homologous region of the α chain of the DR antigen or monoclonal antibody to the homologous of the α -chain of the class I antigen shows an increase in the relative number of CD19⁺ cells (pan B marker) when compared to untreated sample. The relative number of CD19⁻CD3⁻ cells decreased slightly in blood samples treated with monoclonal antibody to the α -chain of DR antigen or treated with monoclonal antibody to class I antigens (see Table 14 & Charts 2, 3 & 4). Treatment of blood samples of patient 09 with monoclonal antibody to class I antigens increased the relative number of CD3⁺ cells and decreased slightly the relative number of CD19⁺

and CD19⁻CD3⁻ cells. However, treatment of an enriched preparation of B-lymphocytes obtained from healthy blood donors with monoclonal antibody to the β -chain or α -chain of DR antigen showed similar immunophenotypic changes to those obtained with patient with B-CLL.

5

Treatment of HIV⁺ and IgA deficient patients with monoclonal antibody to the β -chain of the DR antigen increased the relative number of CD3⁺ cells and decreased the relative number of CD19⁺ cells. However, treatment of the same blood sample with monoclonal antibody to the homologous region of class I antigen did not produce the same effect. Treatment of blood samples obtained from patients (34/BD and 04/BD) with B-cell deficiency showed variable immunophenotypic changes when treated with monoclonal antibodies to the β -chain of the DR antigen, class I antigens and CD4 antigen.

10

15

CD4 AND CD8 PANEL

Blood samples analysed using the CD19 and CD3 panel (Table 14) were also immunophenotyped with the CD4 and CD8 panel (Table 15). Both panels seem to agree and confirm each other. Incubation for 2 hours of blood samples of patients with B-CLL (Table 15, patients 5/6 and 10, Charts 2, 3 & 4) with monoclonal antibody to the homologous region of the β -chain of the DR antigen or with this monoclonal antibody plus cyclophosphamide increased the relative number of CD8⁺ and CD4⁺ cells and cells coexpressing both markers. On the other hand, treatment of the same samples with monoclonal antibodies to the homologous region of the α -chain of the DR antigen or the homologous region of the α -chain of class I antigen did not produce the same effects.

20

25

30

Comparison of immunophenotypic trends obtained at 2 hours and 24 hours incubation periods with monoclonal antibody to the β -chain of the DR antigen plus cyclophosphamide revealed reverse changes in the relative number of CD4 and CD8 positive cells (Table 15, patient 5/6 with B-CLL at 2 hours and 24 hours) and such changes were in accordance with those obtained when the same blood sample was

analysed with the CD19 and CD3 panel (Table 14 the same patient). The later findings indicate that the subsequent differentiation is reversible as the undifferentiated cells can differentiate into T-lymphocytes or B-lymphocytes.

5 DR AND CD3 PANEL

The immunophenotypic changes obtained with DR and CD3 (Table 16) panel confirm the findings obtained with CD19 and CD3 panel and CD4 and CD8 panel (Tables 14 & 15 & Charts 2, 3 & 4) which followed treatment of the same blood samples with
10 monoclonal antibodies to the homologous region of the beta- or alpha- side of the DR antigen or monoclonal antibody to class I antigens or monoclonal antibody to the β -chain of the DR antigen plus cyclophosphamide at 2 hour analysis.

From the results, it would appear that the monoclonal antibody to the homologous
15 region of the β -chain of the DR antigen is extremely capable of driving the production of CD3 positive cells from DR⁺ cells.

Furthermore, treatments such as those involving engagement of the α -chain of DR antigens or engagement of the β -side of the molecule in conjunction with
20 cyclophosphamide (prolonged incubation time) promoted increases in the relative number of CD19⁺ cells or DR⁺ cells.

CD56&16 AND CD3 PANEL

25 Treatment of blood samples, especially of those of patients with B-CLL with high B-lymphocyte counts with monoclonal antibody to the homologous region of the β -chain of the DR antigen increased the relative number of CD56&16 positive cells.

In these patients the relative number of CD3⁺ and CD56⁺ and CD16⁺CD3⁺ cells also
30 increased following treatment of blood samples with monoclonal antibody to the β -chain, confirming earlier observations noted with the same treatment when the same blood samples were analysed with CD3 and CD19 and DR and CD3 panels.

CD45 AND CD14 PANEL

Blood samples treated with monoclonal antibodies to the β - or alpha- chains of the DR antigen or to the β -chain plus cyclophosphamide or class I antigens were also analysed with the CD45 and CD14 panel (Table 18). The delineation of CD45 low, CD45 high and CD45 medium is arbitrary. Treatment of blood sample 5/6 (at 2 hours) with monoclonal antibodies to the β -chain of the DR antigen or with this monoclonal antibody plus cyclophosphamide generated CD45⁺ low cells and increased the relative number of CD45⁺ medium cells. However, the former treatment increased the relative number of CD45⁺ high cells and the latter treatment decreased the relative number of CD45⁺ medium cells and these changes appeared to be time dependent.

Blood samples of patient 5/6 and 10 (B-CLL) on treatment with monoclonal antibody to class I antigens showed a decrease in the relative number of CD45⁺ medium cells and similar observations were noted in blood samples 09 and HIV⁺ following the same treatment when compared to untreated samples. Treatment of blood samples of HIV⁺ and IgA/D patients with monoclonal antibody to class I antigen increased the relative number of CD45⁺ low cells when compared to untreated samples or samples treated with monoclonal antibody to the β -chain of the DR antigen. However, blood samples of these patients showed a decrease in the relative number of CD45⁺ medium cells on treatment with monoclonal antibody to the homologous regions of the β -chain of the DR antigen. Medium CD45⁺ cells increased in blood samples of IgA/D patient following monoclonal antibody to class I antigen treatment. Cells that were extremely large, heavily granular and expressing intense levels of CD45 antigen were noted in treated blood samples with monoclonal antibody to the homologous region of the β -chain of DR antigen of MHC class II antigens (see Charts 1, 2, 3, 4 & 5).

CD8 AND CD28 PANEL

The CD28 antigen is present on approximately 60% to 80% of peripheral blood T (CD3⁺) lymphocytes, 50% of CD8⁺ T lymphocytes and 5% of immature CD3-thymocytes. During thymocyte maturation, CD28 antigen expression increases from low density on most CD4⁺CD8⁺ immature thymocytes to a higher density on virtually all mature CD3⁺, CD4⁺ or CD8⁺ thymocytes. Cell activation further augments CD28 antigen density. Expression of the CD28 also divides the CD8⁺ lymphocytes into two functional groups. CD8⁺CD28⁺ lymphocytes mediate alloantigen-specific cytotoxicity, that is major histocompatibility complex (MHC) class I-restricted. Suppression of cell proliferation is mediated by the CD8⁺CD28⁻ subset. The CD28 antigen is a cell adhesion molecule and functions as a ligand for the B7/BB-1 antigen which is present on activated B lymphocytes.

Treatment of blood samples of patients (Table 19, patients 5/6 and 8) with B-CLL with monoclonal antibody to the homologous region of β -chain of the DR antigen increased the relative number of CD8⁺, CD28⁺ and CD8⁺CD28⁺ cells and all other types of treatments did not.

CD34 AND CD2 PANEL

The CD34 antigen is present on immature haematopoietic precursor cells and all haematopoietic colony-forming cells in bone marrow, including unipotent (CFU-GM, BFU-E) and pluripotent progenitors (CFU-GEMM, CFU-Mix and CFU-blast). The CD34 is also expressed on stromal cell precursors. Terminal deoxynucleotidyl transferase (TdT)⁺ B- and T-lymphoid precursors in normal bone are CD34⁺. The CD34 antigen is present on early myeloid cells that express the CD33 antigen but lack the CD14 and CD15 antigens and on early erythroid cells that express the CD71 antigen and dimly express the CD45 antigen. The CD34 antigen is also found on capillary endothelial cells and approximately 1% of human thymocytes. Normal peripheral blood lymphocytes, monocytes, granulocytes and platelets do not express the CD34 antigen. CD34 antigen density is highest on early haematopoietic

progenitor cells and decreases as the cells mature. The antigen is absent on fully differentiated haematopoietic cells.

5 Uncommitted CD34⁺ progenitor cells are CD38⁻, DR⁻ and lack lineage-specific antigens, such as CD71, CD33, CD10, and CD5, while CD34⁺ cells that are lineage-committed express the CD38 antigen in high density.

10 Most CD34⁺ cells reciprocally express either the CD45RO or CD45RA antigens. Approximately 60% of acute B-lymphoid leukaemia's and acute myeloid leukaemia express the CD34 antigen. The antigen is not expressed on chronic lymphoid leukaemia (B or T lineage) or lymphomas. The CD2 antigen is present on T lymphocytes and a subset of natural killer lymphocytes (NK).

The results are shown in Charts 2, 3 and 5.

15

Analysis of blood samples of a patient with B-CLL (Table 20, patient 5/6 at 2hours) after treatment with monoclonal antibodies to the β -chain of the DR antigen or the α -chain of the same antigen revealed marked increases in the relative number of CD34⁺ and CD34⁺CD2⁺ cells after treatment with the former antibody. Since the same blood samples were immunophenotyped with the above mentioned panels (see Tables 20 14 to 19) for other markers the increase in the relative number of CD34⁺ and CD34⁺CD2⁺ cells observed here seems to coincide with increases in the relative number of CD4⁺CD8⁺, CD8⁺CD3⁺ and CD4⁺CD3⁺ single positive (SP) cells. Furthermore, these findings which seem exclusive to engagement of the β -chain of the HLA-DR antigen, are in direct support that the process is giving rise to T-lymphopoiesis via B lymphocyte regression.

25

On analysing the same treatment 24 hours later the CD34⁺ cells seemed to decrease in levels to give rise to further increase in the relative number of T lymphocytes. 30 The process of retrodifferentiation that initially gave rise to T-lymphopoiesis can be reversed to give rise to B-lymphopoiesis. The former phenomenon was observed at 2 hours incubation time with monoclonal antibody to the β -chain of the HLA-DR

antigen plus cylophosphamide, whereas the latter process was noted at 24 hours incubation time with the same treatment in the same sample (Chart 2).

5 Treatment of blood samples of HIV⁺ patient (Table 20 patient HIV⁺) with monoclonal antibody to the β -chain of the HLA-DR antigen markedly increased the relative number of CD34⁺ and CD2⁺CD34⁺ cells and so did treatment of the same blood sample with monoclonal antibody to the β -chain of the HLA-DR antigen and monoclonal antibody to the α -chain of the same antigen when added together. However, treatment of this blood sample with monoclonal antibody to the α -chain of
10 the HLA-DR antigen did not affect the level of CD34⁺ cells. Treatment of blood samples obtained from a 6-day old baby (BB/ST Table 20) who was investigated at that time for leukaemia and who had very high number of atypical cells (blasts) in his blood with monoclonal antibody to the β -chain of the HLA-DR antigen, or monoclonal antibody to the α -chain of the same antigen or both monoclonal antibodies
15 added together resulted in the following immunophenotypic changes.

On analysis of untreated blood samples the relative number of CD34⁺ and DR⁺ cells were markedly increased and on treatment with monoclonal antibody to the β -chain the relative number of CD34⁺ cells further increased but were noted to decrease on
20 treatment with monoclonal antibody to the α -chain of the HLA-DR antigen or treatment with monoclonal antibodies to the α and β -chains of the molecule when added together. However, the latter treatment increased the relative number of CD34⁺CD2⁺ cells and the opposite occurred when the same blood sample was treated with monoclonal antibody to the β -chain of the HLA-DR antigen alone. On
25 analysis of treated and untreated blood aliquots of the same patient 24 hours later the relative number of CD34⁺ decreased with all above mentioned treatments except it was maintained at a much higher level with monoclonal antibody to the β -chain of the HLA-DR antigen treatment. The latter treatment continued to decrease the relative number of CD34⁺CD2⁺ cells 24 hours later.

30

These results indicate that engagement of the HLA-DR antigen via the β -chain promotes the production of more CD34⁺ cells from CD2⁺CD34⁺ pool or from more

mature types of cells such as B-lymphocytes of patients with B-CLL and these results indicate that this type of treatment promotes retrodifferentiation. However, immunophenotyping of blood samples 24 hours later suggests that these types of cells seem to exist in another lineage altogether and in this case cells seem to exist or rather commit themselves to the myeloid lineage which was observed on analysis of treated blood sample with the CD7 and CD13&33 panel.

Morphology changes immunophenotypic characteristics of B-lymphocytes of B-CLL and enriched fractions of healthy individuals (using CD19 beads) on treatment with monoclonal antibodies to homologous regions of the β -chain of MHC class II antigens. These were accompanied by a change in the morphology of B-lymphocytes. B-lymphocytes were observed colonising glass slides in untreated blood smears were substituted by granulocytes, monocytes, large numbers of primitive looking cells and nucleated red blood cells. No mitotic figures or significant cell death were observed in treated or untreated blood smears.

The results of Table 20 also demonstrate a further important finding in that according to the method of the present invention it is possible to prepare an undifferentiated cell by the retrodifferentiation of a more mature undifferentiated cell.

20

D. MICROSCOPE PICTUES

In addition to the antigen testing as mentioned above, the method of the present invention was followed visually using a microscope.

25

In this regard, Figure 1 is a microscope picture of differentiated B cells before the method of the present invention. Figure 2 is a microscope picture of undifferentiated cells formed by the retrodifferentiation of the B cells in accordance with the present invention wherein the agent was a monoclonal antibody to the homologous regions of the β -chain of HLA-DR antigen. The undifferentiated cells are the dark stained clumps of cells. Figure 3 is a microscope picture of the same undifferentiated cells but at a lower magnification.

30

Figures 1 to 3 therefore visually demonstrate the retrodifferentiation of B cells to undifferentiated stem cells by the method of the present invention.

5 Figure 4 is a microscope picture of differentiated B cells before the method of the present invention. Figure 5 is a microscope picture of undifferentiated cells formed by the retrodifferentiation of the B cells in accordance with the present invention wherein the agent used was a monoclonal antibody to the homologous regions of the β -chain of HLA-DR antigen. Again, the undifferentiated cells are the dark stained clumps of cells. Figure 6 is a microscope picture of the formation of differentiated granulocyte cells from the same undifferentiated cells of Figure 5.

10 Figures 4 to 6 therefore visually demonstrate the retrodifferentiation of B cells to undifferentiated stem cells by the method of the present invention followed by commitment of the undifferentiated cells to new differentiated cells being of a different lineage as the original differentiated cells.

15 The retrodifferentiation of T cells to undifferentiated stem cells by the method of the present invention followed by commitment of the undifferentiated cells to new differentiated cells being of a different lineage as the original differentiated cells was also followed by microscopy.

E. SUMMARY

20 In short, the examples describe *in vitro* experiments that reveal extremely interesting findings regarding the ontogeny and development of T and B lymphocytes which can be utilised in the generation of stem cells to affect lymphohaematopoiesis in peripheral blood samples in a matter of hours.

30 Treatment of peripheral blood samples obtained from patients with B-cell chronic lymphocytic leukaemia's (B-CLL) with high B lymphocyte counts, with monoclonal antibody to the homologous region of the β -chain of class-II antigens gave rise to a marked increase in the relative number of single positive (SP) T-lymphocytes and

their progenitors which were double positive for the thymocyte markers CD4 and CD8 antigens and these were coexpressed simultaneously. However, these phenomena were always accompanied by a significant decrease in the relative number of B-lymphocytes. These observations were not noted when the same blood samples were treated with monoclonal antibodies to the homologous region of the α -chain of class-II antigens or to the homologous region of class-I antigens.

Treatment of whole blood obtained from patients with B-cell chronic lymphocytic leukaemia (CLL) with monoclonal antibody to the homologous region of the B chain of the HLA-DR antigen appeared to give rise to T-lymphopoiesis. This event was marked by the appearance of double positive cells coexpressing the CD4 and CD8 markers, the appearance of cells expressing CD34 and the concomitant increase in the number of single positive CD4⁺ CD3⁺ and CD8⁺ CD3⁺ lymphocytes. Furthermore, the immunophenotypic changes that took place in the generation of such cells were identical to those cited for thymocyte development, especially when measured with time.

The percentages of double positive cells (DP) generated at 2 hour incubation time of whole blood with monoclonal antibody to the homologous region of the β -chain of the DR antigen, decreased with time and these events were accompanied by increase in the percentages of single positive CD4⁺ CD3⁺ and CD8⁺ CD3⁺ cells simultaneously and at later times too. TCR α and β chains were also expressed on these types of cells.

B-lymphocytes were constantly observed to lose markers such as CD19, CD21, CD23, IgM and DR and this coincided with the appearance of CD34⁺ and CD34⁺ CD2⁺ cells, increases in CD7⁺ cells, increases in CD8⁺ CD28⁺ and CD28⁺ cells, increases in CD25⁺ cells, the appearance of CD10⁺ and CD34⁺ cells and CD34⁺ and CD19⁺ cells increases in CD5⁺ cells, and cells expressing low levels of CD45 antigen. These changes were due to treatment of blood with monoclonal antibody to the homologous region of the β -chain of HLA-DR antigen.

The immunophenotypic changes associated with such treatment is consistent with retrodifferentiation and subsequent commitment (i.e. recommitment) of B lymphocytes, because the majority of white blood cells in blood of patients with B-CLL before treatment were B lymphocytes. Furthermore, B-lymphocytes of patients with B-CLL which were induced to become T-lymphocytes following treatment with cyclophosphamide and monoclonal antibody to the β -chain of HLA-DR antigen, were able to revert back to B lymphocytes following prolonged incubation with this treatment.

On analysis of treated samples with monoclonal antibody to the β -chain of HLA-DR antigen, with CD16&56 and CD3 and CD8 and CD3 panels, the relative number of cells expressing these markers steadily increases in increments consistent with those determined with panels such as CD19 and CD3 and DR and CD3. Investigation of the supernatant of treated and untreated samples of patients with HIV infection using nephelometry and immunoelectrophoresis reveals increased levels of IgG indicating that the B-cells must have passed through the plasma cell stage. The increase in the relative number of all above-mentioned cells was also accompanied by the appearance of medium size heavily granulated cells expressing the CD56&16 antigens in extremely high amounts. Other cells which were extremely large and heavily granulated were observed transiently and these were positive for CD34 and double positive for CD4 CD8 markers. Other transient cells were also observed and these were large and granular and positive for the CD3 and CD19 receptors. CD25 which was present on the majority of B-lymphocytes was lost and became expressed by newly formed T-lymphocytes which were always observed to increase in number.

CD28⁺CD8⁺ and CD28⁺ cells appeared after treatment of whole blood of patients with B-CLL with monoclonal antibody to the homologous region of the B chain of the DR antigen. These findings were due to treatment of blood with monoclonal antibody to the homologous region of the β -chain of HLA-DR antigen.

T-lymphopoiesis generated in this manner was also observed in peripheral blood of healthy blood donors, cord blood, bone marrow, patients with various infections

including HIV⁺ individuals and AIDS patients, enriched fractions for B lymphocytes obtained from blood samples of healthy blood donors, IgA deficient patients and other patients with various other conditions. Furthermore, analysis of myeloid markers in treated samples of two patients with B-CLL with monoclonal antibody to the homologous region of the β -chain of the HLA-DR antigen showed a significant increase in the relative number of cells expressing the myeloid markers such as CD13 and CD33. These markers were coexpressed with the CD56 & 16 or the CD7 antigens. However, the relative number of CD7⁺ cells with T-lymphocyte markers and without myeloid antigens was observed on a separate population of cells. These particular observations were not seen in untreated samples or in samples treated with monoclonal antibodies to class I antigens or the homologous region of the α -chain of HLA-DR antigen (see Charts 2 & 3). These final results suggest that B-lymphocytes once triggered via the β -chain of the HLA-DR antigen are not only able to regress into T-lymphocyte progenitor cells but are also capable of existing into the myeloid and erythroid lineages.

It should be noted that the stem cells that are produced by the method of the present invention may be stem cells of any tissue and are not necessarily limited to lymphohaematopoietic progenitor cells.

Other modifications of the present invention will be apparent to those skilled in the art.

TABLE 1

CLINICAL DIAGNOSIS OF PATIENTS AND EXPERIMENTAL CONDITIONS OF BLOOD SAMPLES INCLUDING COULTER COUNTS (WBC) FOLLOWING AND PRIOR TREATMENT OF BLOOD SPECIMENS WITH VARIOUS MONOCLONAL ANTIBODIES AND OTHER AGENTS

PATIENT ID	DIAGNOSIS	EXPT COND	WBC/L X10 ⁻⁹		%LYMPH		#LYMPH/L 10X ⁻⁹		AGENT ML/mL
			B	A	B	A	B	A	
1	B-CLL	12HR AT 22C	100	ND	86.1	ND	86.1	ND	ANTI-B 50
2	B-CLL	2HR AT 22C 2HR AT 22C	39.1	9.6	74.4	63.3	29.9		ANTI-B 50 ANTI-B PE 50
			39.1	37.7	74.4	75.1	29.9	28.3	
3	B-CLL	6HR AT 22C 6 HR AT 22C	39.5	9.3	71.9	67.2	28.3		ANTI-B 50 ANTI-B PE 50
			39.5	37.7	71.9	72.5	28.3	27.4	
4	B-CLL	24HR AT 22C 24HR AT 22C	39	9.3	73	66.5	28.4		ANTI-B 50 ANTI-B PE 50
			39	36.2	73	70.4	28.4	25.5	
5	B-CLL	2HR AT 22C							ANTI-B 50 ANTI-A 50 ANTI-I 50 ANTI-B & TOXIC AGENT 25+25

PATIENT ID	DIAGNOSIS	EXPT COND	WBC/L X10-9		%LYMPH		#LYMPH/L 10X-9		AGENT ML/mL
			B	A	B	A	B	A	
6	B-CLL	24HR AT 22C							ANTI-B 50
7	B-CLL	24HR AT 22C	170	128	95.4	91.1	16.9	11.6	ANTI-B 10 ANTI-I 10 ANTI-B & TOXIC AGENT 10+20
				178		94.2		16.8	
				130		90.4		11.9	
8	B-CLL	24HR AT 22C	16	7	81.9	51.2	14	3.0	ANTI-B 20
9	B-CLL	12HR AT 22C	+++	89.5	87	85.1	+++	76.2	ANTI-B 30 ANTI-I 30 ANTI-4 30 A N T I - I+II+4 10+10+10
				+++		85.4		+++	
				+++		89.4		+++	
				95.4		84.9		+++	
10	B-CLL	2HR AT 22C	19.3	ND	86	ND	16.7	ND	ANTI-B 30 ANTI-I 30
92	OUT PATIENT	2HR AT 22C	5.4	ND	74.5	ND		ND	ANTI-B 20
87	OUT PATIENT	2HR AT 22C	4.8	ND	59.3	ND		ND	ANTI-B 20
91	OUT PATIENT	2HR AT 22C	4.2	ND	54.0	ND		ND	ANTI-B 20
21	OUT PATIENT	2HR AT 22C	3.9	ND	47.4	ND		ND	ANTI-B 20

PATIENT ID	DIAGNOSIS	EXPT COND	WBC/L X10-9		%LYMPH		#LYMPH/L 10X-9		AGENT ML/mL
			B	A	B	A	B	A	
34	OUT PATIENT	2HR AT 22C	7.2	ND	20.0	ND		ND	ANTI-B 20
36	CMV INFANT	4HR AT 22C	13.4	ND	7.3	ND		ND	ANTI-B 20
93	HIV+ INFANT	4HR AT 22C	5.6	ND	43.4	ND		ND	ANTI-B 20
BB/ST	40% BLAST IN BLOOD 6 DAYS OLD	2HR AT 22C 24HR AT 22C	60.5	ND	20.2	ND	12.2	ND	ANTI-B 50 ANTI-A 50 ANTI-AB 25+25
HIV25	AIDS	2HR AT 22C	7.5	ND	34.8	ND	2.6	ND	ANTI-B 50 ANTI-A 50 ANTI-AB 25+25
43/BD	B CELL DEFICIENT	4HR AT 22C							ANTI-B 20 ANTI-I 20 ANTI-4 20
0B/BD	B CELL DEFICIENT	4HR AT 22C							ANTI-B 20 ANTI-I 20 ANTI-4 20

PATIENT ID	DIAGNOSIS	EXPT COND	WBC/L X10 ⁻⁹		%LYMPH		#LYMPH/L 10X ⁻⁹		AGENT ML/ml
			B	A	B	A	B	A	
HIV+	AIDS	6HR AT 22C							ANTI-B 20 ANTI-I
IgA-D	IgA DEFICIENT	6HR AT 22C							ANTI-B 20 ANTI-I 20

EXPT COND : EXPERIMENTAL CONDITIONS

B : BEFORE

A : AFTER

ANTI-B : monoclonal antibody to the homologous region of the β -chain of HLA-DR antigen

ANTI-A : monoclonal antibody to the homologous region of the α -chain of HLA-DR antigen

ANTI-I : monoclonal antibody to the homologous region of Class I antigens

ANTI-AB : both ANTI-B and ANTI-A added together

ANTI-4 : monoclonal antibody to the CD4 antigen

ANTI-I+II+4 : ANTI-I and ANTI-B and ANTI-4 added together

Cytotoxic agent : Cyclophosphamide

ML/ml : micro litre per ml

L : litre

TABLE 2

IMMUNOPHENOTYPING OF PATIENTS WITH B-CLL AND OTHER CONDITIONS
BEFORE AND AFTER
TREATMENT OF BLOOD SAMPLES WITH MONOCLONAL ANTIBODY
TO THE HOMOLOGOUS REGION OF THE B CHAIN OF THE HLA-DR
WITH CD19 AND CD3 MONOCLONAL ANTIBODIES.

PATIENT	% CD19+		% CD3+		%CD19+CD3+		% C D 3 - CD19-		% CD19+HGCD 3- FC+	
	B	A	B	A	B	A	B	A	B	A
1	88	40	5	19	1	2	6	26	0	12
2	73	15	10	33	2	7	15	41	0	5
3	73	11	11	33	2	2	14	52	0	2
4	71	13	11	37	2	2	16	47	0	2
5	85	40	5	16	1	1	6	26	3	18
6	85	43	5	18	1	1	6	27	3	10
7	90	72	2	4	0	2	7	8	0	14
8	62	25	7	13	0	1	29	55	2	6
9	90	85	2	3	0	0	2	1	1	4
10	78	50	7	14	0	0	14	26	0	8
92	12	10	38	49	0	1	49	40	0	0
91	7	3	35	29	0	1	59	67	0	0
87	5	3	32	38	1	1	63	58	0	0
21	1	1	27	29	1	0	71	70	0	0
34	1	1	13	13	0	2	86	84	0	0
39	10	6	23	25	0	0	67	69	0	0
93	6	3	26	27	1	1	68	70	0	0
BB/ST	1	1	12	13	0	0	87	86	0	0
HIV25	7	2	26	27	0	0	68	67	0	0
43/BD	0	0	40	42	0	1	58	54	0	0
04/BD	0	0	49	41	0	3	43	41	0	0
HIV+	1	1	10	14	0	0	89	87	0	0
IgA/D	10	1	21	25	2	3	67	71	0	0

B: before treatment . A: after treatment

TABLE 3

IMMUNOPHENOTYPING OF PATIENTS WITH B-CLL
AND OTHER CONDITIONS BEFORE AND AFTER TREATMENT OF BLOOD SAMPLES
WITH MONOCLONAL ANTIBODY TO THE B CHAIN OF THE HOMOLOGOUS REGION
OF THE HLA-DR WITH MONOCLONAL ANTIBODIES TO CD4 AND CD8.

PATIENT	%CD8+		%CD4+		%CD4+CD8+		%CD4-CD8-		CD4+LOW	
	B	A	B	A	B	A	B	A	B	A
1	2.8	16	2.9	11.4	0	3.2	93.1	67.6	0	0
2	6.2	13.2	9.1	24.3	0	9.4	78.7	46	5.8	6.3
3	7.2	13.1	7.4	23.9	0	8.2	78.8	48.1	6.3	6.6
4	10.1	24.2	7.6	24.9	0.3	2.8	77.5	42	4.6	5
5	2.9	16.2	1.8	7.6	0	2	95	62.3	0	0
6	ND	12	ND	8.1	ND	1.7	ND	75.7	ND	0
7	1.9	2.6	1.9	2.8	0	0	95.8	94.3	0	0
8	3.2	7	3.9	6.9	0.1	2	87.3	79.8	4.3	6
9	2.8	2.9	3	3	0	0	94	94.1	0	0
10	5.7	9.4	4.7	9.1	0.6	0.8	88.7	79.2	0	0
92	21	19	21.6	21	0.8	1.9	50.5	52.5	5.3	4.8
91	15.4	18.1	13.6	17.9	6.2	2.6	57	57.3	7.3	3.5
87	16.8	21.8	13.4	20.4	2.9	2.6	59.5	48.9	7	5.6
21	16	24.1	9.1	15.2	1	2.6	69.6	53.2	3.7	4.2
34	9.4	11.9	5.7	4.9	2	3.3	67.6	65.3	14.4	14.5
39	12.1	12.6	13.1	14.6	0.4	1.3	62.3	66.7	11.9	4.3
93	18.9	20.3	9.7	10.3	1.8	1.4	65.5	65.9	3.4	1.8
BB/ST	6.3	13	5.7	7.3	2.2	1.1	34.7	70.3	50.3	7.6
HIV25	24.1	24.9	0.8	1.1	1.3	5	70.2	69.3	2.9	3.8

TABLE 4
 IMMUNOPHENOTYPING OF PATIENTS WITH B-CLL AND OTHER CONDITIONS BEFORE AND AFTER
 TREATMENT OF SAMPLES WITH MONOCLONAL ANTIBODY TO THE B CHAIN OF THE HLA-DR WITH
 MONOCLONAL ANTIBODIES TO CD3 AND DR

PATIENT	DR+		CD+		CD+DR+		DR-CD3-		DR+HCD3-	
	B	A	B	A	B	A	B	A	B	A
1	87	45.5	3.5	20.8	2.5	4.2	6.9	21.6	0	7.6
2	76.2	19.4	9.6	29.2	3.9	8.7	10.3	36.8	0	5.5
3	77.7	18.3	8.4	29.4	4.1	8.8	9.6	38.1	0	4.7
4	76.8	19.2	7.6	29.5	6.2	10.5	9.1	37.2	0	3.3
5	ND	47.1	ND	11.5	ND	9.9	ND	22.4	ND	7.3
6	ND									
7	91.4	85.8	2.4	2.5	0.7	0.7	5.1	4.2	0	6.3
8	61.8	28.9	6.5	11.2	2	3.3	28.6	54.6	0	1.5
9	ND									
10	82.6	44.7	4.3	9.8	3.3	5	9.8	22.2	0	17.9
92	23.8	14.1	39.3	41.9	4.5	3.5	32.4	40.5	0	0
91	13.3	7.9	29.6	32.5	3.4	2.9	53.4	56.5	0	0
87	14.8	12.2	28.4	34.1	5.5	6.6	51.1	46.5	0	0
21	ND									
34	11.9	12.9	10.4	13.7	0.8	0.6	76.7	72.8	0	0
39	25.6	13.7	24.6	25.2	3	2.8	46.5	25.2	0	0
93	13.3	8.9	18.4	18.9	9.9	10.1	58.2	61.7	0	0
BB/ST	44.2	32.5	11.7	12.2	0.8	0.8	43	49.4	0	4.6

TABLE 5

IMMUNOPHENOTYPING OF PATIENTS WITH B-CLL AND OTHER CONDITIONS BEFORE AND AFTER TREATMENT OF BLOOD SAMPLES WITH MONOCLONAL ANTIBODY TO THE HOMOLOGOUS REGION OF THE B CHAIN OF THE HLA-DR WITH MONOCLONAL ANTIBODIES TO CD16+56 AND CD3.

PATIENTS	CD56+&16		CD3+		CD56+&16+CD3+		CD56+&16-CD3-	
	B	A	B	A	B	A	B	A
1	2	4.3	5.7	19.7	0.7	1.7	91.3	73
2	11.5	38.9	12.4	32.6	1	6.6	74.5	21
3	12	36.2	12.1	34.5	0.7	6	75.5	23
4	12.2	32.6	12.4	39.6	0.5	5	74.7	22.2
5	ND	13.1	ND	9.4	ND	2.6	ND	73.5
6	ND							
7	0.8	0.8	2.8	2.4	0.3	0.2	96.2	96.4
8	24.8	52	5.4	12.4	0.9	4.1	68.3	31.1
9	ND							
10	1.1	1.3	6.1	13.7	2.1	2.5	90.5	82.4
92	23.8	34.5	44.3	44.8	2	1.5	29.2	18.6
91	4.6	3.9	28.8	29.4	3	3.2	63.3	63.3
87	47.9	46.4	28.8	36.5	5.8	3.7	16.9	13
21	9.4	9.4	19.7	23.6	4.2	6.7	66	59.5

PATIENTS	CD56+&16	CD3+	CD56+&16+CD3+	CD56+&16-CD3-
34	21.5 12.8	11.4 13.7	1.8 0.6	64.6 72.8
39	7 2.7	23.4 26.1	1.1 0.1	68.2 71
93	55.8 54.9	26.2 26.3	1.7 2	16.1 16.8
BB/ST	28.8 29.9	12 14.3	0.8 1.8	49.4 53.6

TABLE 6

IMMUNOPHENTYPING OF PATIENTS WITH B-CLL AND OTHER CONDITIONS BEFORE AND AFTER OF TREATMENT OF BLOOD WITH MONOCLONAL ANTIBODY TO THE HOMOLOGOUS REGION OF THE B CHAIN OF THE HLA-DR WITH MONOCLONAL ANTIBODIES TO CD45 AND CD14.

PATIENTS	CD45+H		CD45+L		CD45+CD14+	
	B	A	B	A	B	A
1	90.5	70.1	7.5	21.9	0.8	3.3
2	85.8	52.2	8.8	38.3	5.3	9.5
3	84.3	52.2	9.9	33.8	5.1	13.2
4	91.5	79.2	2.1	7	5.7	10.8
5	63.1	84.6	34.9	9.4	0.5	3.6
6	ND					
7	52.8	85.2	45.6	13.9	0.5	0.6
8	71.1	55	71.1	34.5	5.3	8.7
9	SEE					
10	79.7	47.3	16.3	48	2.1	1.9
92	61.7	64.7	27.4	26.6	5.9	3.6
91	49.4	49.2	40.4	44.3	6.5	3.2
87	52.4	61.5	36.1	28.7	7	6.5
21	45.8	43.3	44.3	47.6	6.2	3.3
34	24.4	24.6	54.8	59.6	13.3	9.7
39	48.7	46.3	30.5	42.1	14.5	8.8
93	SEE					
HIV+	22.6	26.9	66.8	63.5	6.8	6.7
IgA/D	47.4	59.8	41.9	33.3	5.9	4.1

TABLE 7

IMMUNOPHENOTYPING OF PATIENT WITH B-CLL AND OTHER CONDITIONS BEFORE AND AFTER TREATMENT OF BLOOD WITH MONOCLONAL ANTIBODIES TO THE HOMOLOGOUS REGION OF THE B-CHAIN OF THE HLA-DR WITH MONOCLONAL ANTIBODIES TO CD8 AND CD3.

PATIENTS	CD8+		CD3+		CD8+CD3+		CD8-CD3-	
	B	A	B	A	B	A	B	A
2	0.6	1.3	7.5	19.3	4.2	19.3	87.7	63.8
3	1.1	1.4	8.3	20.3	5.6	18.4	84.8	59.8
4	3.5	2.9	8.3	27	3.9	16.6	84.2	53.1
92	3.5	1.9	27.6	25.2	18.4	19	50.3	52.8
91	4	3.1	18.2	19	14.1	12.6	63.6	65.3
87	5.7	3.9	19.9	23.6	15.4	17.4	58.8	55
21	4.8	7.4	16.3	17.3	13.7	13	65.2	62
34	3	3.6	5.2	6.7	7.6	7.5	84.1	82.3

TABLE 8

IMMUNOPHENOTYPING OF A PATIENT WITH B-CLL WITH TIME AFTER TREATMENT OF BLOOD WITH PE CONJUGATED MONOCLONAL ANTIBODY TO THE HOMOLOGOUS REGION OF THE B-CHAIN OF THE HLA-DR MEASURE WITH MONOCLONAL ANTIBODIES TO CD45 AND CD14.

TIME	DR+CD45+CD14+r	CD45+L	CD45+H
2HR	81.7	8.2	8.2
6HR	80.7	8.1	10.6
24HR	79	1.1	18.4

TABLE 9

IMMUNOPHENOTYPING OF A PATIENT WITH B-CLL WITH TIME AFTER TREATMENT OF BLOOD WITH PE CONJUGATED MONOCLONAL ANTIBODY TO THE HOMOLOGOUS REGION OF THE B-CHAIN OF THE HLA-DR MEASURED WITH MONOCLONAL ANTIBODIES TO CD19 AND CD3.

TIME	CD19+DR+r	CD3+	CD3+DR+	CD19-CD3-DR-
2HR	87.4	10.1	1.8	10.7
6HR	75.5	10.4	3.1	10.7
24HR	74	11.7	2.9	11

TABLE 10

IMMUNOPHENOTYPING OF A PATIENT WITH B-CLL WITH TIME AFTER TREATMENT OF BLOOD WITH PE CONJUGATED MONOCLONAL ANTIBODY TO THE HOMOLOGOUS REGION OF THE B-CHAIN OF THE HLA-DR MEASURED WITH MONOCLONAL ANTIBODIES TO CD4 AND CD8.

TIME	CD8+& DR+r	CD4+	CD4+&CD8+&DR+r	CD4+DR+	CD4-CD8-DR-
2HR	77.6	6.8	5.4	1.3	8.8
6HR	75.8	6.7	6.4	1.8	9.3
24HR	77	6.4	4.8	1.9	11

TABLE 11

IMMUNOPHENOTYPING OF A PATIENT WITH B-CLL WITH TIME AFTER TREATMENT OF BLOOD WITH PE CONJUGATED MONOCLONAL ANTIBODY TO THE HOMOLOGOUS REGION OF THE B-CHAIN OF THE HLA-DR MEASURED WITH MONOCLONAL ANTIBODIES TO CD3 AND DR.

TIME	DR+	CD3+	CD3+DR+	CD3+DR-
2HR	75	9.5	4.2	10.9
6HR	74.8	8.8	4.8	10.9
24HR	ND	ND	ND	ND

TABLE 12

IMMUNOPHENOTYPING OF A PATIENT WITH B-CLL WITH TIME AFTER TREATMENT OF BLOOD WITH PE CONJUGATED MONOCLONAL ANTIBODY TO THE HOMOLOGOUS REGION OF THE B-CHAIN OF THE HLA-DR MEASURED WITH MONOCLONAL ANTIBODIES TO CD16&56 AND CD3.

TIME	CD56+&16+DR+r	CD3+	CD56+CD16+&CD3+DR+r	CD56-CD16-&CD16-DR-
2HR	82.5	9.5	4.1	3.5
6HR	84.3	7.5	4.1	3.3
24HR	ND	ND	ND	ND

TABLE 13

IMMUNOPHENOTYPING OF A PATIENT WITH B-CLL WITH TIME AFTER TREATMENT OF BLOOD WITH PE CONJUGATED MONOCLONAL ANTIBODY TO THE HOMOLOGOUS REGION OF THE B-CHAIN OF THE HLA-DR MEASURED WITH MONOCLONAL ANTIBODIES TO CD8 AND CD3.

TIME	CD8+DR+	CD3+	CD8+CD+3&DR+r	CD8-CD3-DR-
2HR	76.2	6.6	6.7	10.6
6HR	76.5	6.2	6.2	10.3

TABLE 14

IMMUNOPHENOTYPING OF PATIENTS WITH B-CLL BEFORE AND AFTER TREATMENT OF BLOOD WITH MONOCLONAL ANTIBODIES TO THE HOMOLOGOUS REGION OF THE A-CHAIN OF THE HLA-DR, THE HOMOLOGOUS REGION OF THE B-CHAIN OF THE HLA-DR, THE TWO MONOCLONAL TOGETHER, MONOCLONAL TO THE HOMOLOGOUS REGION OF THE B-CHAIN PLUS CYCLOPHOSPHAMIDE AND THE HOMOLOGOUS REGION OF CLASS I ANTIGENS MEASURED WITH TIME.

ID	CD19+					CD3+					CD19+CD3+					CD19-CD3-				
	B	A	AB	A	AI	B	A	AB	A	AI	B	A	AB	A	AI	B	A	AB	A	AI
		A		BC			A		BC			A		BC			A		BC	
5/ 6																				
2H	86	91	54	40	89	5	4	16	23	5	1	1	3	2	1	6	4	27	33	5
24	N	88	51	60	86	N	4	18	10	4	N	2	1	2	3	N	4	29	28	7
10																				
2H	77	N	59	N	80	7	N	13	N	7	1	N	1	N	0	14	N	26	N	12
09																				
24	8	N	N	N	6	32	N	N	N	38	1	N	N	N	1	59	N	N	N	56
43 /B D																				
6H	0	N	0	0	0	40	N	42	43	49	0	N	1	0	1	58	N	54	54	47
04 /B D																				
6H	0	N	0	0	0	49	N	41	45	46	0	N	3	1	3	43	N	42	44	41
HI V+																				
6H	1	N	0	N	1	10	N	14	N	12	0	N	0	N	0	89	N	86	N	87
Ig A/ D																				
6H	10	N	1	N	12	21	N	25	N	20	2	N	1	N	3	67	N	71	N	68

B = Before; A = After; AB = after addition to antibody to beta chain; AA = after addition of antibody to alpha chain; ABC = after addition of antibody to either alpha or beta chain and cyclophosphamide; AI = after addition of antibody to Class I.

TABLE 15
CD8 AND CD4

ID	CD8+					CD4+					CD4+CD8+					CD4-CD8-				
	B	A A	AB	A BC	AI	B	A A	AB	A BC	AI	B	A A	AB	A BC	AI	B	A A	AB	A BC	AI
5/ 6																				
2H	3	2	14	10	4	2	2	8	8	3	0	0	3	2	1	95	94	74	79	93
24	N	3	9	4	4	N	3	8	4	3	N	0	2	2	0	N	94	81	90	93
10																				
2H	3	N	7	N	4	4	N	7	N	3	1	N	2	N	1	91	N	83	N	92
09																				
24	10	N	N	N	15	21	N	N	N	38	2	N	N	N	2	61	N	N	N	53

TABLE 16

CD3 AND DR

ID	DR+					CD3+					CD3+DR+					CD3-DR-				
	B	A A	AB	A BC	AI	B	A A	AB	A BC	AI	B	A A	AB	A BC	AI	B	A A	AB	A BC	AI
5/ 6																				
2H	N	90	54	N	87	N	4	12	N	4	N	2	10	N	3	N	5	22	N	5
10																				
2H	83	N	63	N	81	4	N	8	N	4	4	N	7	N	4	9	N	23	N	12
09																				
24	14	N	N	N	13	30	N	N	N	36	3	N	N	N	3	51	N	N	N	47

TABLE 17
CD16&56 AND CD3

	CD56+&16+					CD3+					CD56+&16+CD3+					CD56-&16-CD3-					
ID	B	A	AB	A	AI	B	A	AB	A	AI	B	A	AB	A	AI	B	A	AB	A	AI	
		A		BC			A		BC			A		BC			A		BC		
5/6																					
2H	N	0	13	N	4	N	5	9	N	5	N	1	3	N	1	N	94	74	N	90	
10																					
2H	0	N	1	N	1	6	N	14	N	6	1	N	2	N	1	92	N	65	N	92	
09																					
24	42	N	N	N	41	36	N	N	N	38	2	N	N	N	2	20	N	N	N	19	

TABLE 18
CD45 AND CD14

	CD45+L					CD45+M					CD45+H					CD45+CD14+					
ID	B	A	AB	A	AI	B	A	AB	A	AI	B	A	AB	A	AI	B	A	AB	A	AI	
		A		BC			A		BC			A		BC			A		BC		
5/6																					
2H	0	0	5	10	0	44	43	50	50	32	55	43	50	31	67	1	1	1	2	0	
10																					
2H	0	N	0	N	0	43	N	54	N	35	54	N	42	N	62	1	N	1	N	0	
09																					
24	2	N	N	N	1	18	N	N	N	16	71	N	N	N	76	7	N	N	N	5	
HI V+																					
6H	4	N	3	N	5	63	N	61	N	41	23	N	27	N	40	7	N	7	N	7	
Ig A/D																					
6H	2	N	2	N	4	40	N	31	N	44	47	N	60	N	44	6	N	4	N	6	

TABLE 19
CD8 AND CD28

ID	CD8+					CD28+					CD8+CD28+					CD8-CD28-				
	B	A	AB	A	AI	B	A	AB	A	AI	B	A	AB	A	AI	B	A	AB	A	AI
5/ 6																				
2H	N	3	6	N	3	N	1	4	N	2	N	1	4	N	1	N	95	86	N	94
8																				
2H	4	N	6	N	N	3	N	5	N	N	1	N	3	N	N	9	N	86	N	N

TABLE 20
CD34 AND CD2

ID	CD34+					CD2+					CD34+CD2+					CD34-CD2-				
	B	A	AB	A	A	B	A	AB	A	AI	B	A	AB	A	AI	B	A	AB	A	AI
5/ 6																				
2H	N	1	34	N	N	N	6	13	N	N	N	3	30	N	N	N	90	21	N	N
24	N	1	6	9	N	N	7	23	4	N	N	3	33	43	N	N	87	34	34	N
HI V+																				
2H	2	1	12	13	N	20	21	21	12	N	4	5	9	14	N	7	73	64	60	N
BB /S T																				
2H	26	23	33	14	N	15	14	15	15	N	3	30	23	36	N	2	32	28	35	N
24	N	11	29	11	N	N	13	12	9	N	N	27	9	18	N	N	48	49	61	N

CHART 1

IMMUNOPHENOTYPIC CHANGES OF UNTREATED AND TREATED BLOOD SAMPLE OF PATIENT (2, 3 & 4) WITH MONOCLONAL ANTIBODY TO THE HOMOLOGOUS REGION OF THE β -CHAIN OF HLA-DR ANTIGEN MEASURED WITH TIME.

WITHOUT	WITH	FL1	FL2	TIME
NOTHING001	WITH002	CD45	CD14	2HR
N0001	WE002	CD45	CD14	6HR
001001	002002	CD45	CD14	24HR
NOTHING003	WITH004	CD3	CD19	2HR
N0003	WE004	CD3	CD19	6HR
001003	002004	CD3	CD19	24HR
NOTHING004	WITH005	CD4	CD8	2HR
N0004	WE005	CD4	CD8	6HR
001004	002005	CD4	CD8	24HR
NOTHING005	WITH006	CD3	DR	2HR
N0005	WE006	CD3	DR	6HR
001005	002006	CD3	DR	24HR
NOTHING006	WITH007	CD3	CD56&16	2HR
N0006	WE007	CD3	CD56&16	6HR
001006	002007	CD3	CD56&16	24HR
N003	W004	CD3	CD8	2HR
N0007	WE008	CD3	CD8	6HR
001007	002008	CD3	CD8	24HR

CHART 1A

IMMUNOPHENOTYPIC CHANGES OF UNTREATED AND TREATED BLOOD SAMPLE OF PATIENT (2, 3, 4) WITH MONOCLONAL ANTIBODY TO THE HOMOLOGOUS REGION OF THE β -CHAIN OF HLA-DR ANTIGEN CONJUGATED TO PE MEASURED WITH TIME.

ID	FL1	FL2	TIME
WL003	CD45	CD14	2HR
WEL003	CD45	CD14	6HR
003003	CD45	CD14	24HR
WL005	CD3	CD19	2HR
WEL005	CD3	CD19	6HR
003005	CD3	CD19	24HR
WL006	CD4	CD8	2HR
WEL006	CD4	CD8	6HR
003006	CD4	CD8	24HR
WL007	CD3	DR	2HR
WEL 007	CD3	DR	6HR
WL008	CD3	CD65&16	2HR
WEL 008	CD3	CD56&16	6HR
WL005	CD3	CD8	2HR
WEL009	CD3	CD8	6HR

CHART 2
 IMMUNOPHENOTYPIC CHANGES OF UNTREATED AND TREATED BLOOD OF PATIENT (1) WITH
 MONOCLONAL ANTIBODY TO THE HOMOLOGOUS REGION OF THE β -CHAIN OF HLA-DR ANTIGEN, THIS
 ANTIBODY AND CYCLOPHOSPHAMIDE. MONOCLONAL ANTIBODY TO THE HOMOLOGOUS REGION OF THE
 α -CHAIN OF HLA-DR ANTIGEN AND MONOCLONAL ANTIBODY TO THE HOMOLOGOUS REGION OF CLASS
 I ANTIGEN MEASURED WITH TIME.

WITH	WITHOUT	FL1	FL2	TIME
	NA001	CD45	CD14	2HR
A2B001: AB		CD45	CD14	2HR
A2A : AA		CD45	CD14	2HR
DNAA001:ABC		CD45	CD14	2HR
A1001: AI		CD45	CD14	2HR
	NC001	CD3	CD19	2HR
C2B001:AB		CD3	CD19	2HR
C2A001:AA		CD3	CD19	2HR
DNAC001:ABC		CD3	CD19	2HR
C1001: AI		CD3	CD19	2HR
A124H001:AI		CD3	CD19	24HR
A2B24H001: AB		CD3	CD19	24HR
A2A24H001:AA		CD3	CD19	24HR
A2BX24H001:AB C		CD3	CD19	24HR
	ND001	CD4	CD8	2HR
D2B001: AB		CD4	CD8	2HR
D2A001: AA		CD4	CD8	2HR
DNAD001:ABC		CD4	CD8	2HR
D1001: AI		CD4	CD8	2HR
D124H001:AI		CD4	CD8	24HR
D2BX24H001:AB C		CD4	CD8	24HR
D2B001: AB		CD4	CD8	24HR
D2A001: AA		CD4	CD8	24HR
E1001: AI		CD3	DR	2HR
E2B001: AB		CD3	DR	2HR
E2A001: AA		CD3	DR	2HR
F1001: AI		CD3	CD56&16	2HR
F2B001: AB		CD3	CD56&16	2HR
F2A001: AA		CD3	CD56&16	2HR
G1001: AI		CD28	CD8	2HR
G2A001: AA		CD28	CD8	2HR
G2B001: AB		CD28	CD8	2HR
H1001: AI		CD7	CD33&13	2HR

H2A001: AA		CD7	CD33&13	2HR
WITH	WITHOUT	FL1	FL2	TIME
H2B001: AB		CD7	CD33&13	2HR
I2A001: AA		CD21	CD5	2HR
I2B001: AB		CD21	CD5	2HR
J2A001: AA		CD34	CD2	2HR
J2B001: AB		CD34	CD2	2HR
B2A24H001: AA		CD34	CD2	24HR
B2B24H001: AB		CD34	CD2	24HR
B2BX24H001: ABC		CD34	CD2	24HR
K2B001: AB		CD10	CD25	2HR
K2A001: AA		CD10	CD25	2HR

CHART 3

IMMUNOPHENOTYPIC CHANGES OF UNTREATED AND TREATED BLOOD OF PATIENT (8) WITH
MONOCLONAL ANTIBODY TO THE HOMOLOGOUS REGION OF THE β -CHAIN OF HLA-DR ANTIGEN.

WITH	WITHOUT	FL1	FL2	TIME
	AN001	CD45	CD14	2HR
A2001		CD45	CD14	2HR
	CN001	CD3	CD19	2HR
C2001		CD3	CD19	2HR
	DN001	CD4	CD8	2HR
D2001		CD4	CD8	2HR
	EN001	CD3	DR	2HR
E2001		CD3	DR	2HR
	FN001	CD3	CD56&16	2HR
F2001		CD3	CD56&16	2HR
	GN001	CD28	CD8	2HR
G2001		CD28	CD8	2HR
	HN001	CD7	CD5	2HR
H2001		CD7	CD5	2HR
	IN001	CD13	CD20	2HR
I2001		CD13	CD20	2HR
	JN001	CD45RA	CD25	2HR
J2001		CD45RA	CD25	2HR
	KN001	CD57	CD23	2HR
K2001		CD57	CD23	2HR

CHART 4

IMMUNOPHENOTYPIC CHANGES OF UNTREATED AND TREATED BLOOD SAMPLE OF PATIENT (10)
 WITH MONOCLONAL ANTIBODY TO THE HOMOLOGOUS REGION OF THE β -CHAIN OF HLA-DR ANTIGEN
 AND MONOCLONAL ANTIBODY TO THE HOMOLOGOUS REGION OF CLASS I ANTIGENS.

WITH	WITHOUT	FL1	FL2	TIME
	CLL0001	CD45	CD14	2HR
CLL1001		CD45	CD14	2HR
CLL2001		CD45	CD14	2HR
	CLL0003	CD3	CD19	2HR
		CD3	CD19	2HR
CLL1003		CD3	CD19	2HR
CLL2003		CD3	CD19	2HR
	CLL0004	CD4	CD8	2HR
CLL1004		CD4	CD8	2HR
CLL2004		CD4	CD8	2HR
	CLL005	CD3	DR	2HR
CLL1005		CD3	DR	2HR
CLL2005		CD3	DR	2HR
	CLL0006	CD3	CD56&16	2HR
CLL1006		CD3	CD56&16	2HR
CLL2006		CD3	CD56&16	2HR

CLAIMS

1. A method of preparing an undifferentiated cell, the method comprising contacting a more committed cell with an agent that causes the more committed cell to retrodifferentiate into an undifferentiated cell.
5
2. A method according to claim 1 wherein the more committed cell is capable of retrodifferentiating into an MHC Class I⁺ and/or an MHC Class II⁺ undifferentiated cell.
- 10 3. A method according to claim 1 or claim 2 wherein the more committed cell is capable of retrodifferentiating into an undifferentiated cell comprising a stem cell antigen.
4. A method according to any one of the preceding claims wherein the more committed cell is capable of retrodifferentiating into a CD34⁺ undifferentiated cell.
15
5. A method according to any one of the preceding claims wherein the more committed cell is capable of retrodifferentiating into a lymphohaematopoietic progenitor cell.
- 20 6. A method according to any one of the preceding claims wherein the more committed cell is capable of retrodifferentiating into a pluripotent stem cell.
7. A method according to any one of the preceding claims wherein the undifferentiated cell is an MHC Class I⁺ and/or an MHC Class II⁺ cell.
25
8. A method according to any one of the preceding claims wherein the undifferentiated cell comprises a stem cell antigen.
9. A method according to any one of the preceding claims wherein the undifferentiated cell is a CD34⁺ undifferentiated cell.
30

10. A method according to any one of the preceding claims wherein the undifferentiated cell is a lymphohaematopoietic progenitor cell.
11. A method according to any one of the preceding claims wherein the
5 undifferentiated cell is a pluripotent stem cell.
12. A method according to any one of the preceding claims wherein the more committed cell is an MHC Class I⁺ and/or an MHC Class II⁺ cell.
- 10 13. A method according to any one of the preceding claims wherein the agent acts extracellularly of the more committed cell.
14. A method according to any one of the preceding claims wherein the more committed cell comprises a receptor that is operably engageable by the agent and wherein
15 the agent operably engages the receptor.
15. A method according to claim 14 wherein the receptor is a cell surface receptor.
16. A method according to claim 14 or claim 15 wherein the receptor comprises an
20 α - component and/or a β - component.
17. A method according to claim 16 wherein the receptor comprises a β -chain having homologous regions.
- 25 18. A method according to claim 17 wherein the receptor comprises at least the homologous regions of the β -chain of HLA-DR.
19. A method according to claim 16 wherein the receptor comprises an α -chain having homologous regions.
- 30 20. A method according to claim 19 wherein the receptor comprises at least the homologous regions of the α -chain of HLA-DR.

21. A method according to any one of claims 14 to 20 wherein the agent is an antibody to the receptor.
22. A method according to claim 21 wherein the agent is a monoclonal antibody to
5 the receptor.
23. A method according to claim 18 wherein the agent is an antibody, preferably a monoclonal antibody, to the homologous regions of the β -chain of HLA-DR.
- 10 24. A method according to claim 20 wherein the agent is an antibody, preferably a monoclonal antibody, to the homologous regions of the α -chain of HLA-DR.
25. A method according to any one of the preceding claims wherein the agent modulates MHC gene expression, preferably wherein the agent modulates MHC Class
15 I⁺ and/or MHC Class II⁺ expression.
26. A method according to any one of the preceding claims wherein the agent is used in conjunction with a biological response modifier.
- 20 27. A method according to claim 25 wherein the biological response modifier is an alkylating agent, preferably wherein the alkylating agent is or comprises cyclophosphamide.
28. A method according to any one of the preceding claims wherein the more
25 committed cell is a differentiated cell.
29. A method according to claim 28 wherein the more committed cell is any one of a B cell or a T cell.
- 30 30. A method according to any one of claims 1 to 27 wherein the more committed cell is a more mature undifferentiated cell.

31. A method according to any one of the preceding claims wherein the undifferentiated cell is committed to a recommitted cell.
32. A method according to claim 31 wherein the recommitted cell is of the same lineage as the more committed cell prior to retrodifferentiation.
33. A method according to claim 31 wherein the recommitted cell is of a different lineage as the more committed cell prior to retrodifferentiation.
34. A method according to any one of claims 31 to 33 wherein the recommitted cell is any one of a B cell, a T cell or a granulocyte.
35. A method according to any one of the preceding claims wherein the method is an *in vitro* method.
36. An undifferentiated cell produced according to the method of any one of claims 1 to 35.
37. An undifferentiated cell produced according to the method of any one of claims 1 to 35 for use as or in the preparation of a medicament.
38. Use of an undifferentiated cell produced according to the method of any one of claims 1 to 37 in the manufacture of a medicament for the treatment of an immunological disorder or disease.
39. A recommitted cell produced according to the method of any one of claims 31 to 35.
40. A recommitted cell produced according to the method of any one of claims 31 to 35 for use as or in the preparation of a medicament.
41. Use of a recommitted cell produced according to the method of any one of claims

31 to 35 in the manufacture of a medicament for the treatment of an immunological disorder or disease.

42. A more committed cell having attached thereto an agent that can cause the more
5 committed cell to retrodifferentiate into an undifferentiated cell.

43. A CD19⁺ and CD3⁺ cell.

44. A method of preparing an undifferentiated cell from a more committed cell
10 substantially as hereinbefore described.

45. An undifferentiated cell prepared from a more committed cell substantially as
hereinbefore described.

15 46. A recommitted cell prepared from an undifferentiated cell which has been
prepared from a more committed cell substantially as hereinbefore described.

Amendments to the claims have been filed as follows

1. A method of preparing an undifferentiated cell, the method comprising contacting a more committed cell with an agent that causes the more committed cell to retrodifferentiate into an undifferentiated cell.
5
2. A method according to claim 1 wherein the more committed cell is capable of retrodifferentiating into an MHC Class I⁺ and/or an MHC Class II⁺ undifferentiated cell.
- 10 3. A method according to claim 1 or claim 2 wherein the more committed cell is capable of retrodifferentiating into an undifferentiated cell comprising a stem cell antigen.
4. A method according to any one of the preceding claims wherein the more committed cell is capable of retrodifferentiating into a CD34⁺ undifferentiated cell.
15
5. A method according to any one of the preceding claims wherein the more committed cell is capable of retrodifferentiating into a lymphohaematopoietic progenitor cell.
- 20 6. A method according to any one of the preceding claims wherein the more committed cell is capable of retrodifferentiating into a pluripotent stem cell.
7. A method according to any one of the preceding claims wherein the undifferentiated cell is an MHC Class I⁺ and/or an MHC Class II⁺ cell.
25
8. A method according to any one of the preceding claims wherein the undifferentiated cell comprises a stem cell antigen.
9. A method according to any one of the preceding claims wherein the undifferentiated cell is a CD34⁺ undifferentiated cell.
30

10. A method according to any one of the preceding claims wherein the undifferentiated cell is a lymphohaematopoietic progenitor cell.
11. A method according to any one of the preceding claims wherein the
5 undifferentiated cell is a pluripotent stem cell.
12. A method according to any one of the preceding claims wherein the more committed cell is an MHC Class I⁺ and/or an MHC Class II⁺ cell.
- 10 13. A method according to any one of the preceding claims wherein the agent acts extracellularly of the more committed cell.
14. A method according to any one of the preceding claims wherein the more committed cell comprises a receptor that is operably engageable by the agent and wherein
15 the agent operably engages the receptor.
15. A method according to claim 14 wherein the receptor is a cell surface receptor.
16. A method according to claim 14 or claim 15 wherein the receptor comprises an
20 α - component and/or a β - component.
17. A method according to claim 16 wherein the receptor comprises a β -chain having homologous regions.
- 25 18. A method according to claim 17 wherein the receptor comprises at least the homologous regions of the β -chain of HLA-DR.
19. A method according to claim 16 wherein the receptor comprises an α -chain having homologous regions.
30
20. A method according to claim 19 wherein the receptor comprises at least the homologous regions of the α -chain of HLA-DR.

21. A method according to any one of claims 14 to 20 wherein the agent is an antibody to the receptor.
22. A method according to claim 21 wherein the agent is a monoclonal antibody to
5 the receptor.
23. A method according to claim 18 wherein the agent is an antibody to the homologous regions of the β -chain of HLA-DR.
- 10 24. A method according to claim 20 wherein the agent is an antibody to the homologous regions of the α -chain of HLA-DR.
25. A method according to any one of the preceding claims wherein the agent modulates MHC gene expression.
- 15 26. A method according to any one of the preceding claims wherein the agent is used in conjunction with a biological response modifier.
27. A method according to claim 25 wherein the biological response modifier is an
20 alkylating agent.
28. A method according to any one of the preceding claims wherein the more committed cell is a differentiated cell.
- 25 29. A method according to claim 28 wherein the more committed cell is any one of a B cell or a T cell.
30. A method according to any one of claims 1 to 27 wherein the more committed cell is a more mature undifferentiated cell.

31. A method according to any one of the preceding claims wherein the undifferentiated cell is committed to a recommitted cell.
32. A method according to claim 31 wherein the recommitted cell is of the same lineage as the more committed cell prior to retrodifferentiation.
33. A method according to claim 31 wherein the recommitted cell is of a different lineage as the more committed cell prior to retrodifferentiation.
34. A method according to any one of claims 31 to 33 wherein the recommitted cell is any one of a B cell, a T cell or a granulocyte.
35. A method according to any one of the preceding claims wherein the method is an *in vitro* method.
36. An undifferentiated cell produced according to the method of any one of claims 1 to 35.
37. An undifferentiated cell produced according to the method of any one of claims 1 to 35 for use as or in the preparation of a medicament.
38. Use of an undifferentiated cell produced according to the method of any one of claims 1 to 37 in the manufacture of a medicament for the treatment of an immunological disorder or disease.
39. A recommitted cell produced according to the method of any one of claims 31 to 35.
40. A recommitted cell produced according to the method of any one of claims 31 to 35 for use as or in the preparation of a medicament.
41. Use of a recommitted cell produced according to the method of any one of claims

- 31 to 35 in the manufacture of a medicament for the treatment of an immunological disorder or disease.
42. A more committed cell having attached thereto an agent that can cause the more
5 committed cell to retrodifferentiate into an undifferentiated cell.
43. A CD19⁺ and CD3⁺ cell.
44. A method of preparing an undifferentiated cell from a more committed cell
10 substantially as hereinbefore described.
45. An undifferentiated cell prepared from a more committed cell substantially as
hereinbefore described.
- 15 46. A recommitted cell prepared from an undifferentiated cell which has been
prepared from a more committed cell substantially as hereinbefore described.
47. A method according to claim 23 wherein the antibody is a monoclonal antibody.
- 20 48. A method according to claim 24 wherein the antibody is a monoclonal antibody.
49. A method according to claim 25 wherein the agent modulates MHC Class I⁺
and/or MHC Class II⁺ expression.
- 25 50. A method according to claim 27 wherein the alkylating agent is or comprises
cyclophosphamide.



Application No: GB 9601977.3
Claims searched: 1 to 46

Examiner: Colin Sherrington
Date of search: 23 April 1996

**Patents Act 1977
Search Report under Section 17**

Databases searched:

UK Patent Office collections, including GB, EP, WO & US patent specifications, in:
UK CI (Ed.O): C6F(FHC1,FX)
Int CI (Ed.6): C12N 5/00,5/06,5/08
Other: ONLINE: WPI,CLAIMS,DIALOG/BIOTECH

Documents considered to be relevant:

Category	Identity of document and relevant passage	Relevant to claims
A	Cancer Research 1981,41,4621-4628 -Minoru Fukuda "Tumor-promoting Phorbol Diester-induced Specific Changes in Cell Surface Glycoprotein Profile of K562 Human Leukemic Cells"	1
A	FEBS Letters 1985,188(2),197-204 -Eric Chastre et al. -"Vasoactive intestinal peptide receptor activity and specificity during enterocyte-like differentiation and retrodifferentiation of the human colonic cancerous subclone HT29-18"	1

X Document indicating lack of novelty or inventive step
Y Document indicating lack of inventive step if combined with one or more other documents of same category.
& Member of the same patent family

A Document indicating technological background and/or state of the art.
P Document published on or after the declared priority date but before the filing date of this invention.
E Patent document published on or after, but with priority date earlier than, the filing date of this application.